



# **HIV in MSAW Communities: Examining Challenges, Impacts & Strategies**

NCFH & Valley AIDS Council

January 17<sup>th</sup>, 2024

© National Center for Farmworker Health



# National Center for Farmworker Health

The **National Center for Farmworker Health** is a private, not-for-profit organization located in Buda, Texas, whose mission is "To improve the health of farmworker families".

- Population specific data resources and technical assistance
- Workforce development and training
- Health education resources and program development
- Board Governance training
- Program Management





# Ag Worker Access Campaign



© National Center for Farmworker Health



# Today's Speakers



Armando Molina  
Capacity & Development Trainer/ECHO  
Valley AIDS Council



Pedro Coronado  
Deputy Chief of Organizational Development  
Valley AIDS Council

# HIV in MSAW Communities: Examining Challenges, Impacts & Strategies

Armando Molina & Pedro Coronado  
Valley AIDS Council

# Conflict of Interest Disclosure Statement

- Armando Molina has nothing to disclose
- Pedro Coronado has the following to disclose:
  - Has been a paid presenter for Gilead Sciences

This program is supported by the Health Resources and Services Administration (HRSA) of the U.S. Department of Health and Human Services (HHS) as part of an award totaling \$4,205,743 with 0% financed with non-governmental sources. The contents are those of the author(s) and do not necessarily represent the official views of, nor does mention of trade names, commercial practices, or organizations imply an endorsement by HRSA, HHS, or the U.S. Government. For more information, please visit [HRSA.gov](http://HRSA.gov). *Any trade/brand names for products mentioned during this presentation are for training and identification purposes only.*

## Use of Trade/Brand Names

This program is supported by the Health Resources and Services Administration (HRSA) of the U.S. Department of Health and Human Services (HHS) as part of an award totaling \$4,205,743, with 0% financed with non-governmental sources.

The views expressed do not necessarily reflect the official policies of the Department of Health and Human Services, nor does mention of trade names, commercial practices, or organizations imply endorsement by the U.S. Government. *Any trade/brand names for products mentioned during this presentation are for training and identification purposes only.*

# Unconscious Bias Disclosure

- SCAETC recognizes that language is constantly evolving, and while we make every effort to avoid bias and stigmatizing terms, we acknowledge that unintentional lapses may occur in our presentations.
- We value your feedback and encourage you to share any concerns related to language, images, or concepts that may be offensive or stigmatizing.
- Your input will help us refine and improve our presentations, ensuring they remain inclusive and respectful to participants.



# Learning Objectives

1. Define the unique challenges that MSAWs face in relation to HIV, limited access to health care & stigma.
2. Identify the basic impacts of HIV on MSAW health, including medical mistrust.
3. Learn strategies and interventions that help mitigate HIV transmission and improve healthcare access.

# The Reality

- Ending the domestic HIV/AIDS epidemic will require collaborative, innovative, and community-informed approaches since the factors fueling the epidemic in the United States are largely social and structural

# Valley AIDS Council (VAC)

- Prevention Services
- Treatment Services
- Social Services
- Training for the Healthcare Community



# Overview of HIV and Stage 3 HIV (AIDS)

# Definitions & Meanings

## H

Human

- Only affects HUMANS and lives in HUMANS

## I

Immunodeficiency

- Refers to a lack (deficiency) or breakdown of Immune System

## V

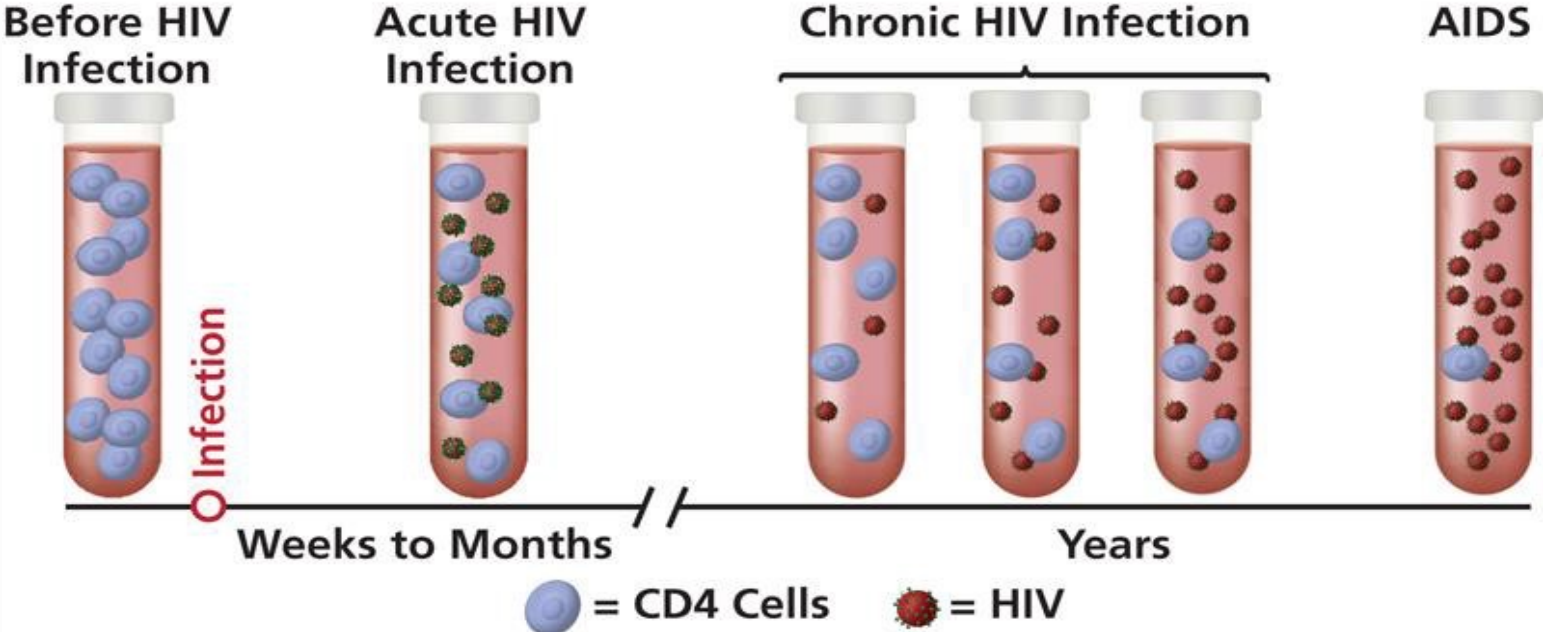
Virus

- Virus attacks and destroys the immune system which is usually able to defend against infections

# AIDS vs Stage 3 HIV

- **AIDS** : Acquired Immune Deficiency Syndrome
- **Stage 3 HIV**: A stage of the effect that the virus has in the body.
- Updating our Language to destigmatize HIV.

# HIV Progression



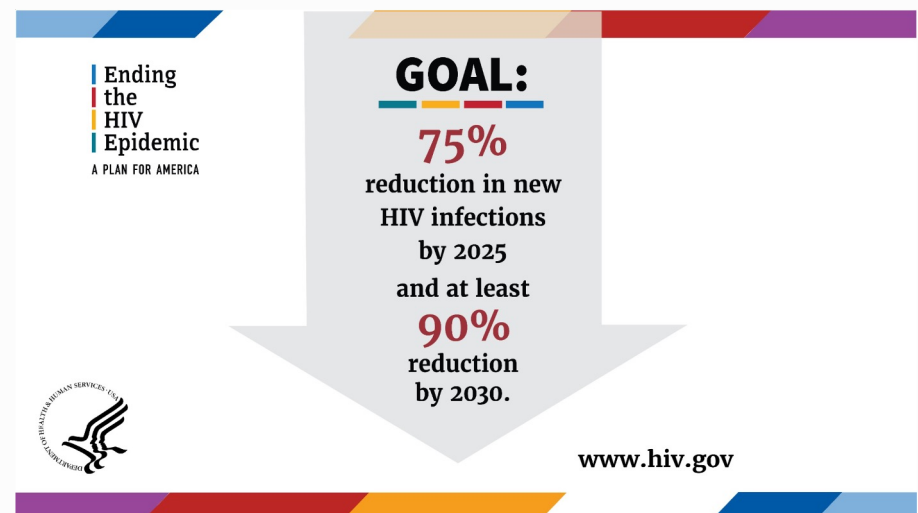
Stage 1

Stage 2

Stage 3

# Treatment as Prevention

- Advancement in medical therapies
  - Antiretroviral Therapies
  - Pre-Exposure Prophylaxis
  - Post Exposure Prophylaxis
  - Harm Reduction





# Importance of U=U

- Continuity of HIV Care
  - Reduce Stigma
  - Reduce transmission of HIV
  - Ending the HIV Epidemic





# Unique Challenges our Migrant Communities Face

# Challenges

- Language
- Culture related stigma
- Proximity to health centers
- Continuity of care affected by constant mobility
- Knowing their rights in the U.S.
- Unreported sexual assault

# Challenges

- Migrants living in high income countries are disproportionately affected by HIV and frequently have poor HIV clinical outcomes.
- Migrants acquire HIV after migration. Late diagnosis often occurs.
- Few studies have examined interventions targeted to improve HIV outcomes among migrants.

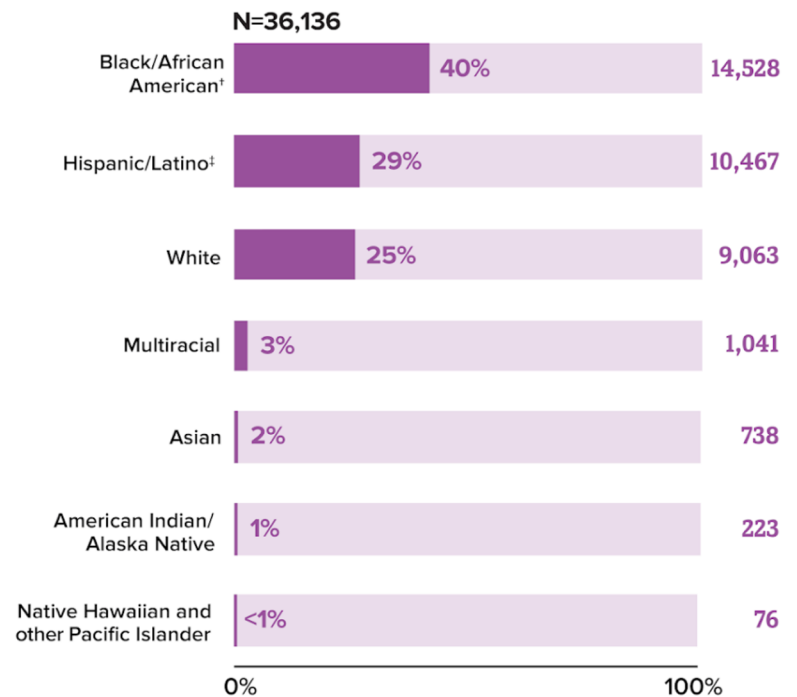
# Challenges

- Who holds power in this country?
- What is Intersectionality and how does it affect our migrant communities?

# Impact of HIV on Migrant Communities

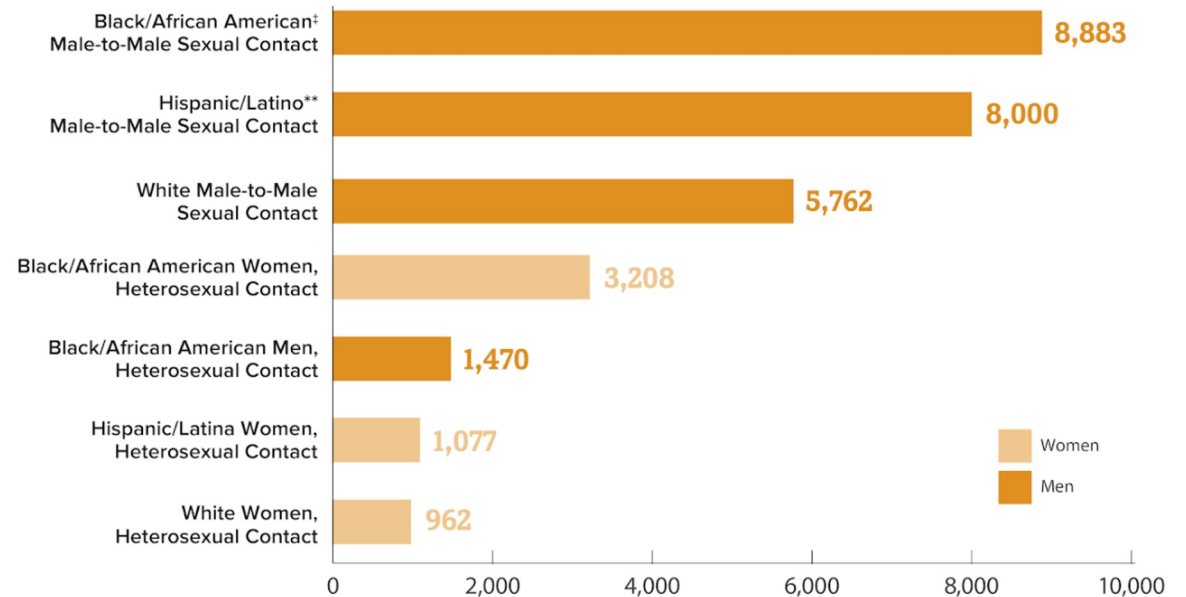
# Impact: New HIV Diagnoses in 2021 by Race and Ethnicity

Racial and ethnic differences in HIV diagnoses persist.



# Impact: New HIV Diagnoses in 2021 by Subpopulation

Gay and bisexual men are the population most affected by HIV.





# Impact

## Historical Trauma: Medical Mistrust

- In 1970, a whistleblower exposed evidence of rampant abuses at the Los Angeles County/USC Medical Center, where mostly Mexican women were coerced into agreeing to be sterilized. Evidence showed that Spanish-speaking women were repeatedly approached during childbirth and pressured to sign consent forms written in English.

## Impact

61% migrants seroconverted after arrival in the US. Data of people newly diagnosed with HIV in New York City

# Strategies and Interventions

## Strategies & Interventions

### Destigmatizing HIV within our Migrant Communities

- Stigma and limited access to care appear to be primary drivers of poor HIV outcomes among migrants in high-income countries.

# Strategies & Interventions

Cultural Humility and Awareness

Addressing Legal and Policy Barriers

Community Engagement and Peer Support

Community Health Workers

# Strategies & Interventions

Language Access

Collaboration with NGOs and Community Organizations

Regular Health Screenings

Data Collection and Research

# Strategies & Interventions

MEET THEM where THEY are AT!

Distribution of Condoms and Educational Materials: Provide free condoms and educational materials on HIV prevention at workplaces, community centers, and other locations frequented by agricultural workers.

# Strategies & Interventions

## Mobile Clinics

- Implement mobile healthcare units to reach remote or isolated migrant worker communities, providing HIV testing, counseling, and treatment services.

## Telemedicine Services

- Utilize telemedicine to overcome geographical barriers, allowing migrant workers to access healthcare services remotely.



# Strategies & Interventions



# Food for Thought

“Moving allyship to activism is about looking for ways that you, as a person in a privileged position, can truly uplift the voices of those who are often out on the frontlines of change”

-Dr. Jonathan Paul Higgins

# References

- Centers for Disease Control and Prevention. *HIV Surveillance Report*, 2021; vol. 34. <http://www.cdc.gov/hiv/library/reports/hiv-surveillance.html>. Published May 2023. Centers for Disease Control and Prevention. *HIV Surveillance Report*, 2021; vol. 34. <http://www.cdc.gov/hiv/library/reports/hiv-surveillance.html>. Published May, 2023.
- NIH National Library of Medicine  
<https://www.ncbi.nlm.nih.gov/pmc/articles/PMC5750122/>
- [www.hiv.gov](http://www.hiv.gov)

# Resources

- National Clinician Consultation Center  
<http://nccc.ucsf.edu/>
  - HIV Management
  - Perinatal HIV
  - HIV PrEP
  - HIV PEP line
  - HCV Management
  - Substance Use Management
- Present on ECHO
  - <https://hsc.unm.edu/scaetc/programs-services/echo.html>
- AETC National HIV Curriculum  
<https://aidsetc.org/nhc>
- AETC National Coordinating Resource Center  
<https://targethiv.org/library/aetc-national-coordinating-resource-center-0>
- HIVMA Resource Directory  
<https://www.hivma.org/globalassets/ektron-import/hivma/hivma-resource-directory.pdf>
- Additional trainings  
[scaetcecho@salud.unm.edu](mailto:scaetcecho@salud.unm.edu)
- [www.scaetc.org](http://www.scaetc.org)

# PLEASE FOLLOW THE SCAETC ON SOCIAL MEDIA

facebook



@SCAETC



@SCAETCNM

Instagram



SCAETC

LinkedIn



SCAETC



# Thank you!

- Q&A
- Armando Molina
  - [amolina@valleyaids.org](mailto:amolina@valleyaids.org)
- Pedro Coronado
  - [peterc@valleyaids.org](mailto:peterc@valleyaids.org)



# Speakers Contact Information



Armando Molina  
Capacity & Development Trainer/ECHO  
Valley AIDS Council  
[amolina@valleyaids.org](mailto:amolina@valleyaids.org)



Pedro Coronado  
Deputy Chief of Organizational Development  
Valley AIDS Council  
[peterc@valleyaids.org](mailto:peterc@valleyaids.org)



# National Center for Farmworker Health

## Population Specific



[Population Estimation](#)



[Fact Sheets & Research](#)



[Health Center Learning Collaboratives](#)

## Health Education/Patient Education Resources



[Resource Hubs](#)  
[Diabetes](#)  
[Mental Health](#)  
[SDOH](#)

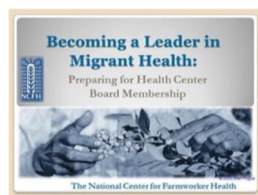


[Digital Stories](#)



[Patient Education Materials](#)

## Governance/ Workforce Training



[Health Center ToolBox](#)



[Archived Webinars](#)



Governance Tools

[Board Tools, Resources & Templates](#)





# NCFH Additional Resources



Una Voz Para La Salud  
Call for Health

1 (800) 377-9968

1 (737) 414-5121 WhatsApp

<http://www.ncfh.org/callforhealth.html>

Helpline for Farmworkers and their families

- Connects Farmworkers to healthcare and social services
- Assists with limited financial resources for health services



# Farmworker Health Network

The **Farmworker Health Network** works cooperatively with HRSA to provide training and technical assistance to over **a thousand Community & Migrant Health Centers** throughout the U.S.



# 2024 Midwest Stream Forum

**REGISTRATION NOW OPEN!**



**#MIDWESTSF24**

April 16-18, 2024  
Albuquerque, NM



<https://bit.ly/MidwestSF24>



## National Center for Farmworker Health Scholarships Now Available!

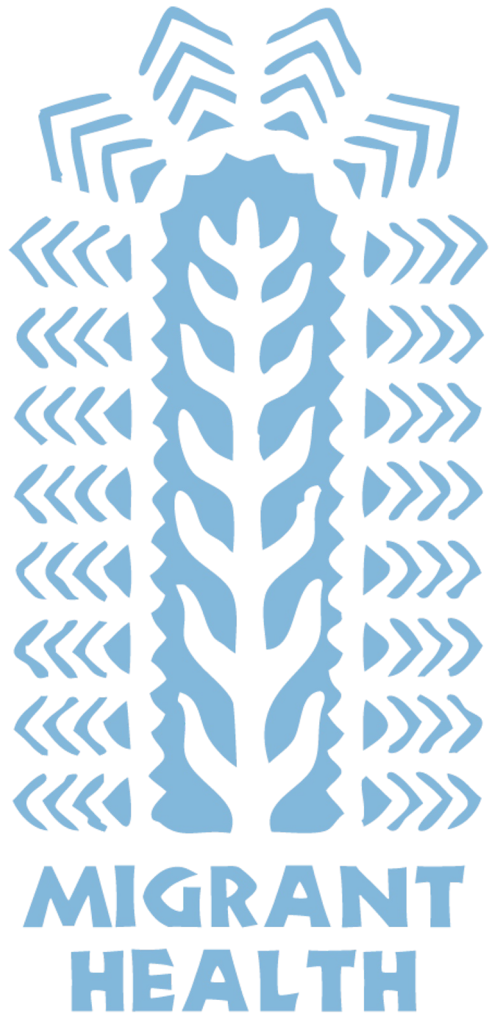
- Scholarships in the amount of up to \$1,500 to support degree programs
- Scholarships in the amount of up to \$1000 to support certificate programs or other educational opportunities, i.e., conference or seminar participation, specific subject courses, etc.

**APPLICATION DEADLINE MARCH 29, 2024**



<https://bit.ly/NCFHScholarships>

Proceeds of artwork sales benefit the NCFH Scholarship Fund.  
"Virgen Campesina" by Arcadio Viveros (2023)



# NCFH Commemorative Artwork



[www.ncfh.org/store/c3/Commemorative\\_Artwork.html](http://www.ncfh.org/store/c3/Commemorative_Artwork.html)

© National Center for Farmworker Health



# Connect with NCFH!

Facebook and Twitter: @NCFHTX



Instagram: @Farmworkerhealth



YouTube: National Center for Farmworker Health



LinkedIn: [company/national-center-for-farmworker-health-ncfh/](https://www.linkedin.com/company/national-center-for-farmworker-health-ncfh/)



**National Center for Farmworker Health, Inc.**  
@NCFHTX · Nonprofit Organization

Sign Up  
eepurl.com

Home About Events Photos More

Liked Message

**About** See All

- Dedicated to improving the health status of Ag worker families: providing info services, training/technical assistance & a variety of products to health centers, organizations, universities, researchers, & other Ag worker health advocates nationwide.
- The National Center for Farmworker Health proactively supports the work of health centers and the empowerment of

National Center for Farmworker Health, Inc. added an event.  
58m ·

**WEBINAR**



# NCFH Newsletters

[Sign up for NCFH News](#)



[Sign up for Boletín de Sol a Sol Newsletter](#)



# Thank you!

This webinar was supported by the Health Resources and Services Administration (HRSA) of the U.S. Department of Health and Human Services (HHS) as part of an award totaling \$1,742,242.00 with 0 percentage financed with nongovernmental sources. The contents are those of the author(s) and do not necessarily represent the official views of, nor an endorsement, by HRSA, HHS or the U.S. Government.

© National Center for Farmworker Health

