



STIs in MSAW Communities: Examining Challenges, Impacts & Strategies

NCFH & Valley AIDS Council

January 24th, 2024

© National Center for Farmworker Health



National Center for Farmworker Health

The **National Center for Farmworker Health** is a private, not-for-profit organization located in Buda, Texas, whose mission is "To improve the health of farmworker families".

- Population specific data resources and technical assistance
- Workforce development and training
- Health education resources and program development
- Board Governance training
- Program Management





Ag Worker Access Campaign



© National Center for Farmworker Health



Today's Speakers



Armando Molina
Capacity & Development Trainer/ECHO
Valley AIDS Council



Pedro Coronado
Deputy Chief of Organizational Development
Valley AIDS Council



STIs in MSAW Communities: Examining Challenges, Impacts & Strategies

Armando Molina & Pedro Coronado
Valley AIDS Council



Conflict of Interest Disclosure Statement

- Armando Molina has nothing to disclose
- Pedro Coronado has the following to disclose:
Has been a paid presenter for Gilead Sciences

This program is supported by the Health Resources and Services Administration (HRSA) of the U.S. Department of Health and Human Services (HHS) as part of an award totaling \$4,205,743 with 0% financed with non-governmental sources. The contents are those of the author(s) and do not necessarily represent the official views of, nor does mention of trade names, commercial practices, or organizations imply an endorsement by HRSA, HHS, or the U.S. Government. For more information, please visit HRSA.gov. *Any trade/brand names for products mentioned during this presentation are for training and identification purposes only.*

Use of Trade/Brand Names

This program is supported by the Health Resources and Services Administration (HRSA) of the U.S. Department of Health and Human Services (HHS) as part of an award totaling \$4,205,743, with 0% financed with non-governmental sources.

The views expressed do not necessarily reflect the official policies of the Department of Health and Human Services, nor does mention of trade names, commercial practices, or organizations imply endorsement by the U.S. Government. *Any trade/brand names for products mentioned during this presentation are for training and identification purposes only.*

Unconscious Bias Disclosure

- SCAETC recognizes that language is constantly evolving, and while we make every effort to avoid bias and stigmatizing terms, we acknowledge that unintentional lapses may occur in our presentations.
- We value your feedback and encourage you to share any concerns related to language, images, or concepts that may be offensive or stigmatizing.
- Your input will help us refine and improve our presentations, ensuring they remain inclusive and respectful to participants.

Learning Objectives

1. Define common risk factors in agricultural communities that make individuals more susceptible to STIs,
2. Recognize basic signs and symptoms of common STIs to promote early detection and treatment.
3. Promote effective preventive measures, including safe sexual practices and awareness of available resources, to reduce the risk of STIs within MSAW.



Overview of Sexually Transmitted Infections



What is a Sexually Transmitted Infection?

S

- A Sexually Transmitted Infection (STI) is an infection that is spread by sexual contact.

T

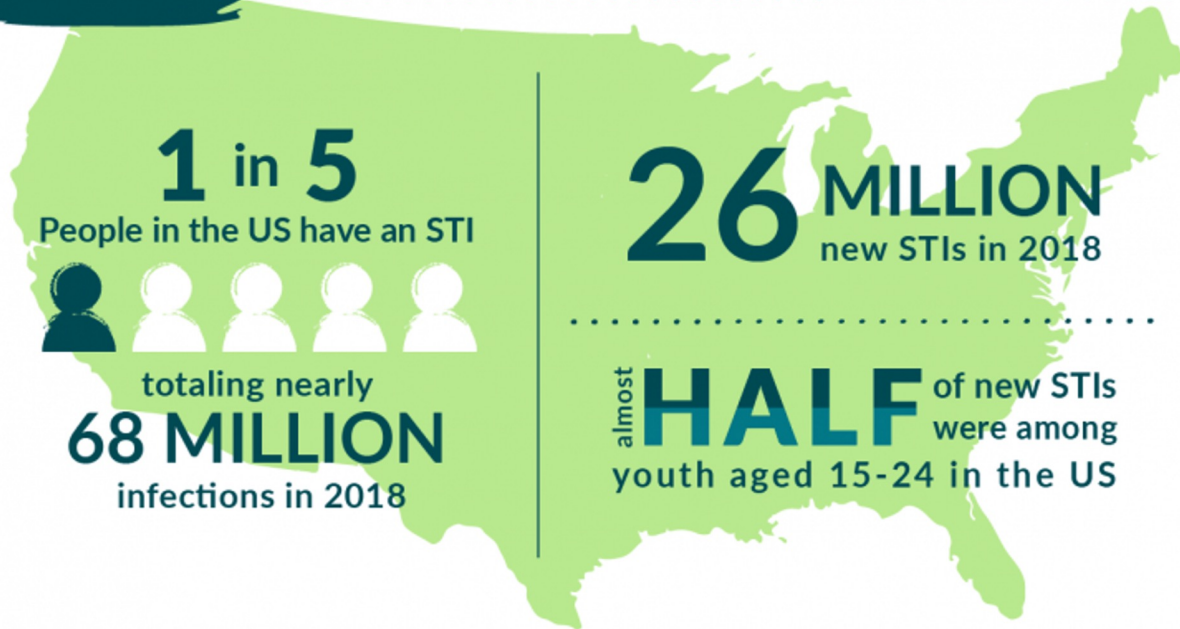
- STIs don't discriminate – they infect sexually active people from all races, social classes and religions.

I

- If not treated, many STIs can cause health problems such as Pelvic Inflammatory Disease (PID), infertility, ectopic pregnancy, and an increased risk for HIV transmission.

STI Prevalence, Incidence, and Cost Estimates in the U.S.

Overview



**ANYONE WHO HAS SEX
COULD GET AN STD,
BUT SOME GROUPS**



**YOUNG PEOPLE AGED 15-24,
GAY & BISEXUAL MEN,
PREGNANT PEOPLE, RACIAL &**

THE
STATE OF STDs
 IN THE
UNITED STATES,
2021

STDs continue to forge ahead, hitting the nation hard.


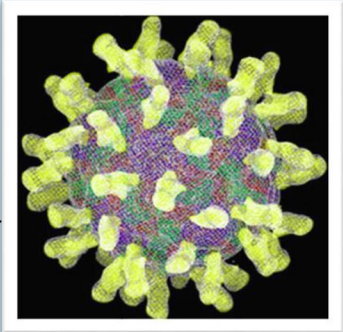
1.6 million
CASES OF CHLAMYDIA
 3.8% decrease since 2017
710,151

CASES OF GONORRHEA
 28% increase since 2017
176,713

CASES OF SYPHILIS
 74% increase since 2017
2,855
CASES OF SYPHILIS

AMONG NEWBORNS
 203% increase since 2017

Bacteria or Virus

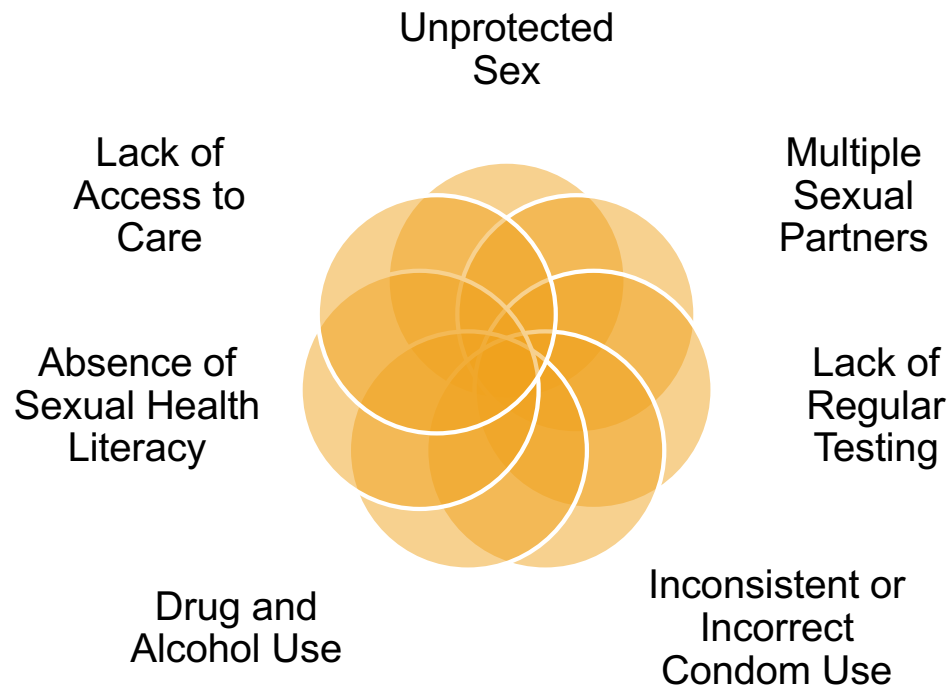
<p>An STI that is caused by bacteria can be treated with antibiotic pills or injections.</p> <p>Bacterial STIs can be cured, but they can also be re-acquired if safer sex practices are not followed.</p>	<p>Bacterial STIs</p>	
	<p>Viral STIs</p>	<p>An STI that is caused by a virus cannot be cured. This means that the infection – and the risk of spreading the virus – lasts a lifetime.</p>



Common Risk Factors for STIs



STI Common Risk Factors



STI Risk Factors

Research shows that there are higher rates of STDs among some racial or ethnic minority groups.

It is important to understand that these higher rates are not caused by ethnicity or heritage, but by social conditions that are more likely to affect minority groups.

Factors such as poverty, large gaps between the rich and the poor, fewer jobs, and low education levels can make it more difficult for people to stay sexually healthy.

Farmworkers in the US are disproportionately affected by the intersecting epidemics of HIV and sexually transmitted infections (STIs).

HIV prevalence has been reported between 2.6% [Centers for Disease Control and Prevention (CDC),] and 13% [Jones, et al.,] among farmworkers in the eastern US, whereas within the general US population, the HIV prevalence is estimated to be 0.6% [CDC,].

Rates for STIs are frequently two to four times higher among Hispanics/Latinos than among whites.

STI Risk Factors

People who cannot afford basic needs may have trouble accessing quality sexual health services.

In communities with higher STI rates, sexually active people may be more likely to get an STI because they have greater odds of selecting a partner who has an STI.

Minority Health

Over two million farmworkers labor in the United States (US) each year. These farmworkers are overwhelmingly Hispanic/Latino, with most being natives of Mexico [[Carroll, et al.](#)].

Data describing current STI infection rates among farmworkers in the US are extremely limited.

Minority Health

According to the 2018 U.S. Census report, the year 2030 marks a demographic turning point for the United States. The nation's population is projected to age considerably and become more racially and ethnically diverse. The population of people who are more than one race is projected to be the fastest growing racial or ethnic group over the next several decades, followed by Asian Americans and Hispanic/Latino Americans.



With the growing diversity – many will witness its impact in our workforce, schools, environments, and social settings. Though health indicators such as life expectancy and infant mortality have improved for most Americans, some people from racial and ethnic minority groups experience a disproportionate burden of preventable disease, death, and disability compared with non-Hispanic White people.

In addition to being among the states with the largest numbers of farmworkers, North Carolina has high rates of AIDS and STDs.

- North Carolina ranks tenth in the nation in reported cases of AIDS and sixth for reported cases of gonorrhea.
- About 36% of the US population lives in the South, but the region has 40% of all people living with AIDS and 46% of newly-identified cases.



STI Early Detection & Treatment



Signs of STIs

Discharge from your vagina or penis

Sores or bumps on and around your genitals, thighs, or butt cheeks

Burning when you pee and/or having to pee a lot

Itching, pain, irritation and/or swelling in your penis, vagina, vulva, or anus

Flu-like symptoms like fever, body aches, swollen glands, and feeling tired.

CDC Guidelines For STI Testing

All adults and adolescents from ages 13 to 64

Sexually active women

Everyone who is pregnant

Gay, bisexual, and other men who have sex with men

Anyone who shares injection drug equipment

People who have had oral or anal sex

<https://gettested.cdc.gov/>

LEFT UNTREATED, STDS CAN CAUSE:



INCREASED RISK OF GIVING
OR GETTING HIV

LONG-TERM
PELVIC/ABDOMINAL PAIN

INABILITY TO GET PREGNANT OR
PREGNANCY COMPLICATIONS

**PREVENT THE
SPREAD OF STIs
WITH THREE
SIMPLE STEPS:**

talk test treat





Effective Preventative Measures

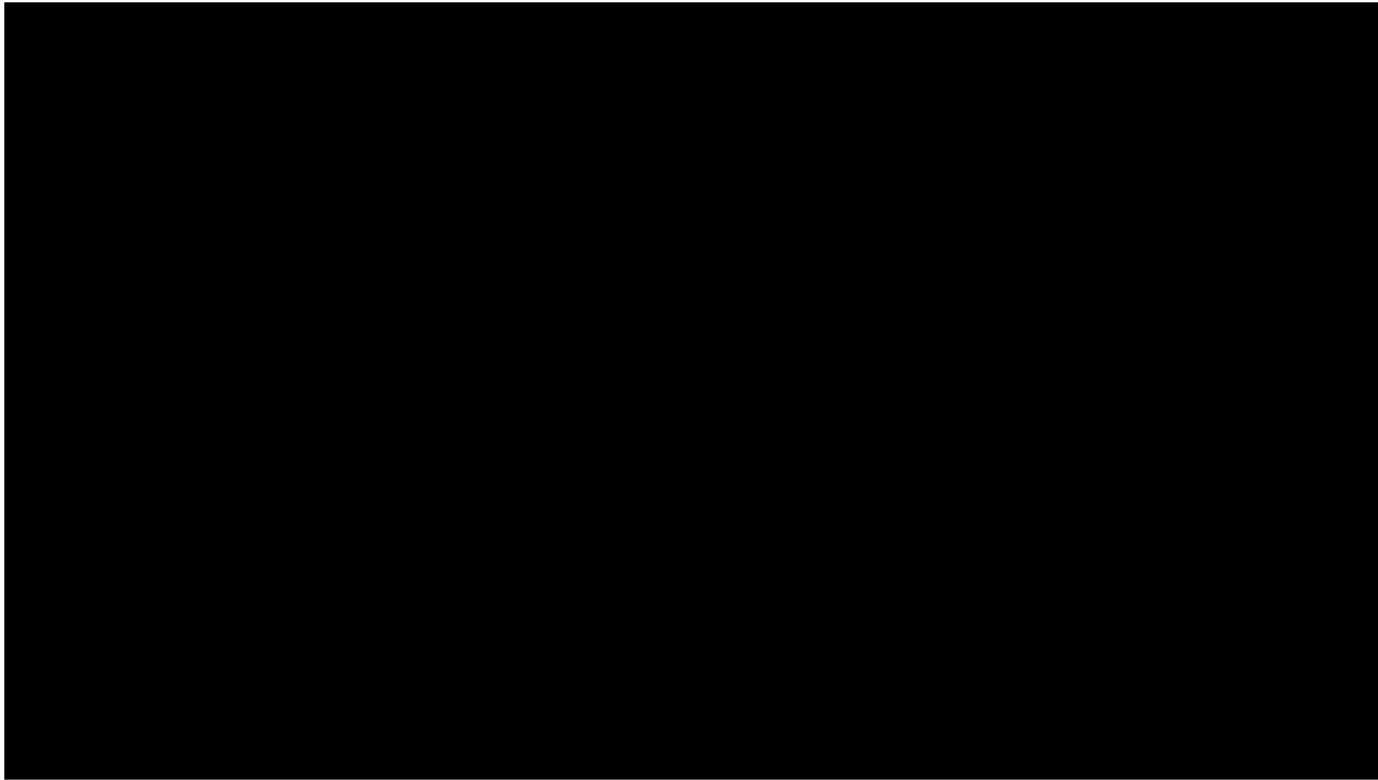


Prevention Methods

- Sexual Health Literacy
- Abstinence
- Substance use Prevention
- Assertive Communication
- Don't Share Needles
- Use Lube
- Use a Condom Consistently
- & Correctly.
- Use Water Based Lube With Condoms



External Condom Demo



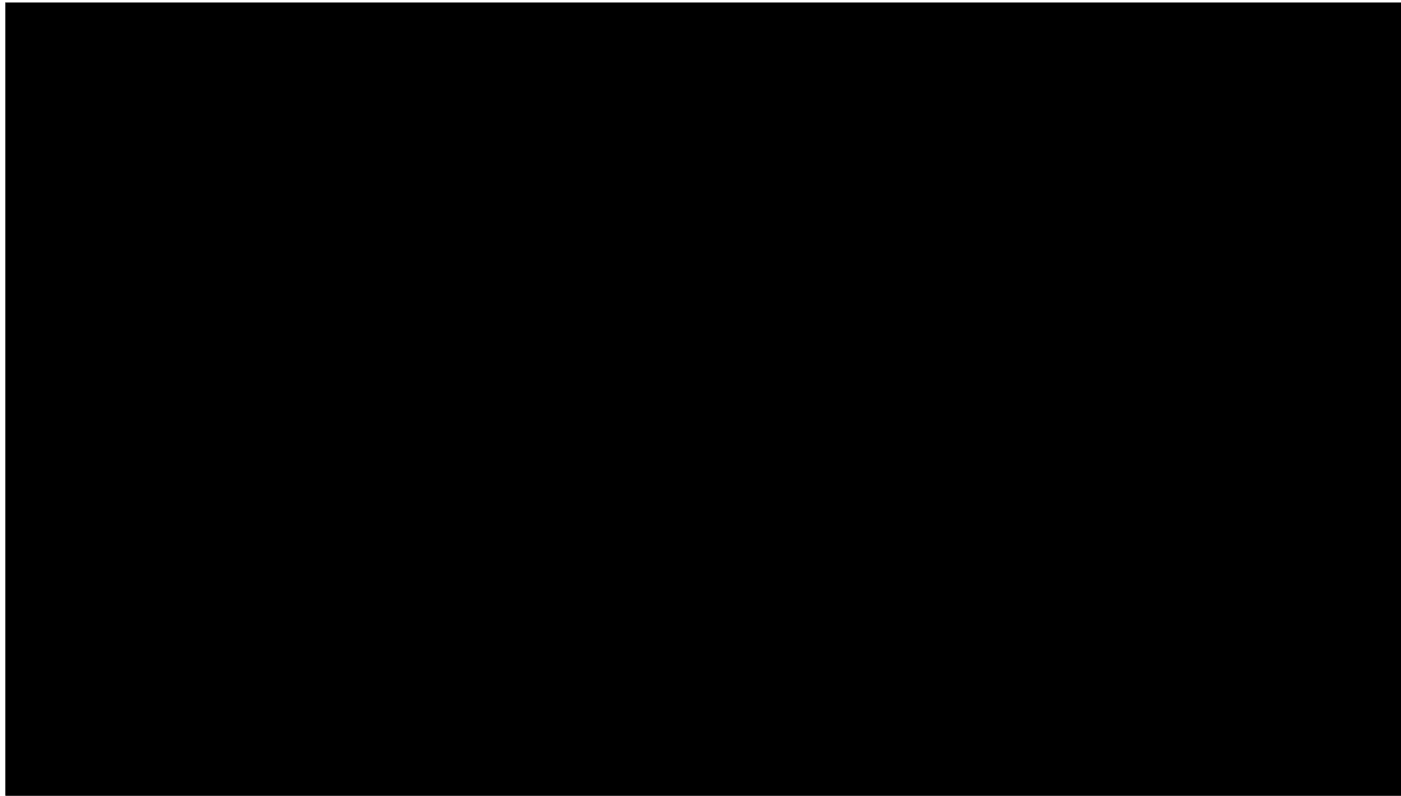
Internal Condom Demo



Innovated Engagement: Sin Vergüenza



¡LISTO! AltaMed PrEP Campaign



Valley AIDS Council Services

- **Primary outpatient care to anyone who is infected or affected by HIV/AIDS in South Texas.**
- **Only HIV/AIDS comprehensive continuum of care in the RGV.**
- **Offers medical services, labs, substance use treatment, mental & behavioral health, pharmacy, dental care, case management services and housing assistance.**
- **Offers free education presentations on HIV/STI and Hepatitis**
- **Offers free HIV/STI and Hepatitis C testing**

References

- Centers for Disease Control and Prevention
<https://www.cdc.gov/std/statistics/prevalence-incidence-cost-2020.htm>
<https://www.cdc.gov/std/health-disparities/default.htm#ftn2>
<https://www.cdc.gov/minorityhealth/>
<https://www.cdc.gov/std/prevention/screeningreccs.htm>
<https://gettested.cdc.gov/>
- NIH, National Library of Medicine
<https://www.ncbi.nlm.nih.gov/pmc/articles/PMC3668338>
- Tulane University
campushealth.tulane.edu
- AltaMed
<https://www.altamed.org/svseries>

Resources

- National Clinician Consultation Center
<http://nccc.ucsf.edu/>
 - HIV Management
 - Perinatal HIV
 - HIV PrEP
 - HIV PEP line
 - HCV Management
 - Substance Use Management
- Present on ECHO
- <https://hsc.unm.edu/scaetc/programs-services/echo.html>
- AETC National HIV Curriculum
<https://aidsetc.org/nhc>
- AETC National Coordinating Resource Center
<https://targethiv.org/library/aetc-national-coordinating-resource-center-0>
- HIVMA Resource Directory
<https://www.hivma.org/globalassets/ektron-import/hivma/hivma-resource-directory.pdf>
- Additional trainings
scaetcecho@salud.unm.edu
- www.scaetc.org

PLEASE FOLLOW THE SCAETC ON SOCIAL MEDIA

facebook



@SCAETC



@SCAETCNM

Instagram



SCAETC

LinkedIn



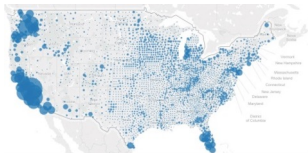
SCAETC





National Center for Farmworker Health

Population Specific



[Population Estimation](#)



[Fact Sheets & Research](#)



[Health Center Learning Collaboratives](#)

Health Education/Patient Education Resources



[Resource Hubs](#)
[Diabetes](#)
[Mental Health](#)
[SDOH](#)



[Digital Stories](#)



[Patient Education Materials](#)

Governance/ Workforce Training



[Health Center ToolBox](#)



[Archived Webinars](#)



Governance Tools

[Board Tools, Resources & Templates](#)



NCFH Additional Resources



Una Voz Para La Salud
Call for Health

1 (800) 377-9968

1 (737) 414-5121 WhatsApp

<http://www.ncfh.org/callforhealth.html>

Helpline for Farmworkers and their families

- Connects Farmworkers to healthcare and social services
- Assists with limited financial resources for health services



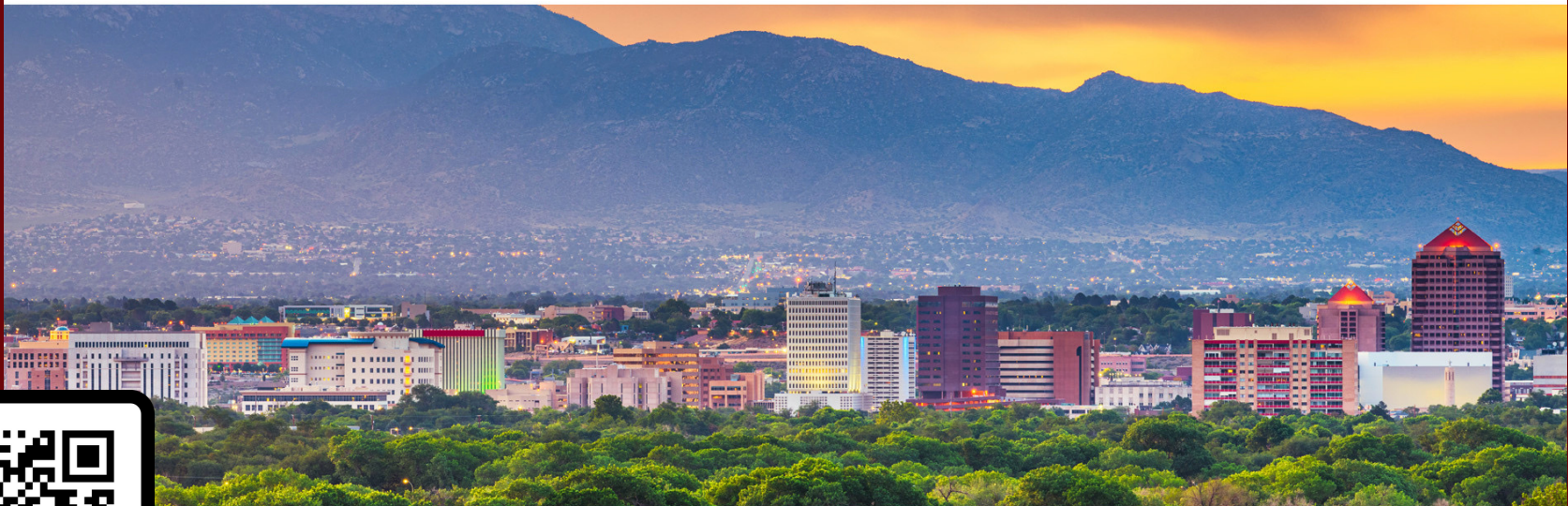
Farmworker Health Network

The **Farmworker Health Network** works cooperatively with HRSA to provide training and technical assistance to over **a thousand Community & Migrant Health Centers** throughout the U.S.



2024 Midwest Stream Forum

REGISTRATION NOW OPEN!



<https://bit.ly/MidwestSF24>

#MIDWESTSF24

April 16-18, 2024
Albuquerque, NM



National Center for Farmworker Health Scholarships Now Available!

- Scholarships in the amount of up to \$1,500 to support degree programs
- Scholarships in the amount of up to \$1000 to support certificate programs or other educational opportunities, i.e., conference or seminar participation, specific subject courses, etc.

APPLICATION DEADLINE MARCH 29, 2024



<https://bit.ly/NCFHScholarships>

Proceeds of artwork sales benefit the NCFH Scholarship Fund.
"Virgen Campesina" by Arcadio Viveros (2023)



Connect with NCFH!

Facebook and Twitter: @NCFHTX



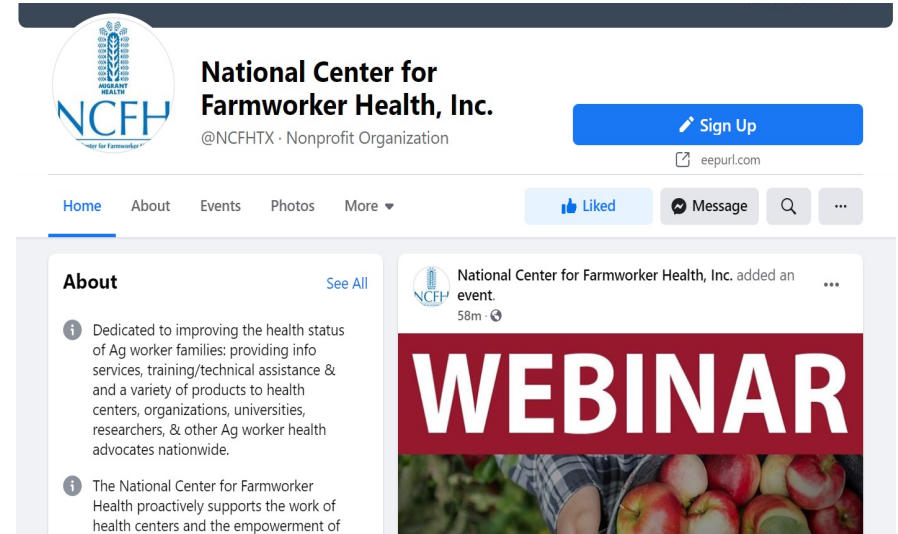
Instagram: @Farmworkerhealth



YouTube: National Center for Farmworker Health



LinkedIn: [company/national-center-for-farmworker-health-ncfh/](https://www.linkedin.com/company/national-center-for-farmworker-health-ncfh/)





NCFH Newsletters

[Sign up for NCFH News](#)



[Sign up for Boletin de Sol a Sol Newsletter](#)



Thank you!

This webinar was supported by the Health Resources and Services Administration (HRSA) of the U.S. Department of Health and Human Services (HHS) as part of an award totaling \$1,742,242.00 with 0 percentage financed with nongovernmental sources. The contents are those of the author(s) and do not necessarily represent the official views of, nor an endorsement, by HRSA, HHS or the U.S. Government.

© National Center for Farmworker Health

