



Beyond Pesticides/ Agricultural Justice

Who are the Agricultural Workers?



- When you think in a healthy agricultural worker what comes to your mind?

- What is your job about?
- What in your personal life motivated you to get involved in the health and well-being of agricultural workers?

- The personal and the professional

Principles of Practice

1. We work for health, not for the absence of disease

- LHA believes in the definition of health from the World Health Organization: "Health a state of physical, mental and social well-being and not the mere absence of disease."

Preamble to the Constitution of the World Health Organization as adopted by the International Health Conference, New York, 19-22 June, 1946; signed on 22 July 1946 by the representatives of 61 States (Official Records of the World Health Organization, no. 2, p. 100) and entered into force on 7 April 1948.

A Profile Of Migrant Health: 2017

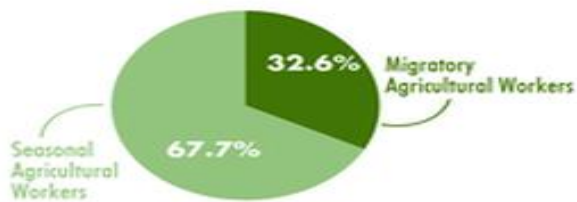
a report by the National Center for Farmworker Health



Data From 174 Community/Migrant Health Centers



***875,142 Migrant/Seasonal Agricultural Worker Patients**



60% Adults (18-64)



53% Female

*875,142 reflects patients seen in Migrant Health Centers
UDS reports a total of 972,251 Migrant and Seasonal Agricultural Workers by M/CHCs



90.7% of Migrant and Seasonal Agricultural Worker patients identified as **Hispanic/Latino**

That's approximately **788,139 patients**



37.6% of Agricultural Workers are Uninsured

71.6% of Agricultural Workers are below Poverty Level

vs
80% in 2012
83% in 2010

Selected Reported Diagnoses for MSAW, 2017



Locations by Streams of C/MHCs by number of MSAW patients served





90.7%
of Migrant and Seasonal
Agricultural Worker patients
identified as **Hispanic/Latino**

That's approximately

788,139 patients



**37.6% of Agricultural Workers
are Uninsured**

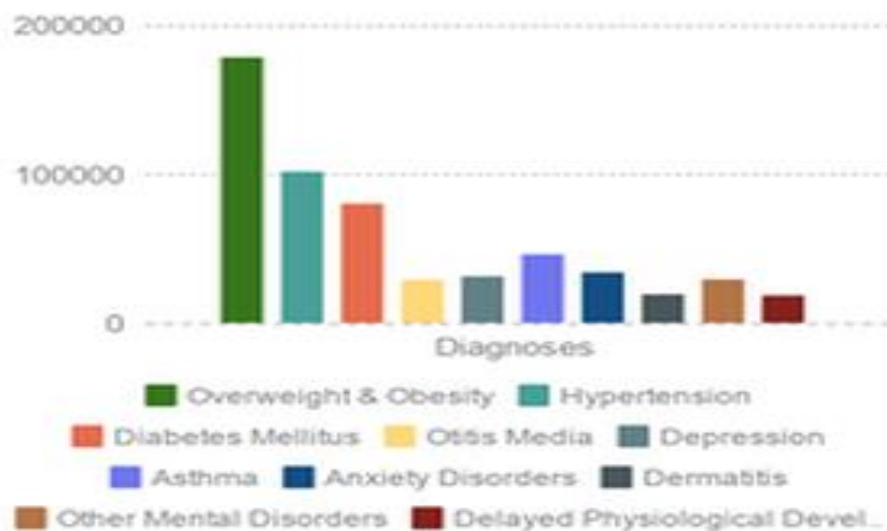
**71.6% of Agricultural Workers
are below Poverty Level**

vs

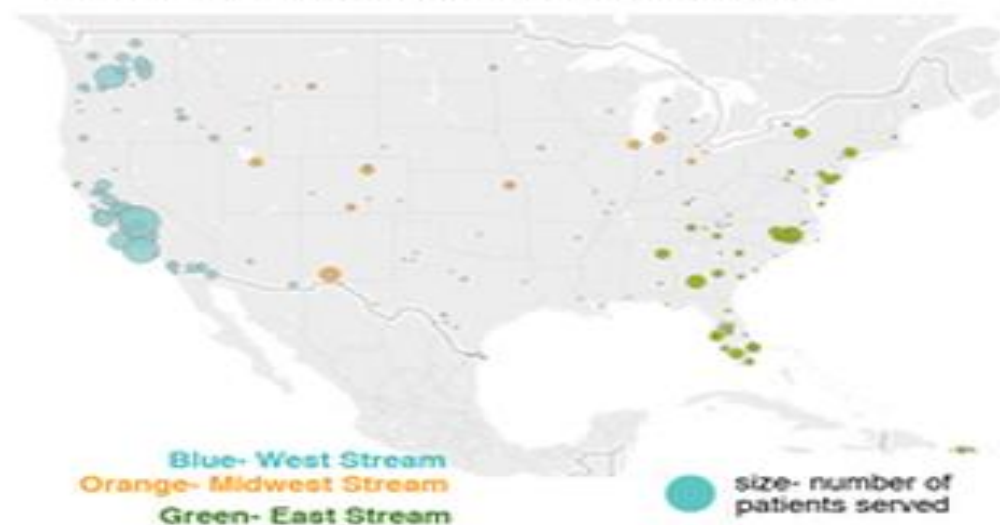
80% in 2012

83% in 2010

Selected Reported Diagnoses for
MSAW, 2017



Locations by Streams of C/MHCs by
number of MSAW patients served



National Center for Farmworker Health
1770 FM 967
Buda, TX 78610
512.312.2700 www.ncfh.org

2 – 3 million agricultural workers in the USA

- Life Expectancy
- Income: 30% under poverty level
- Quality of housing
- Education for them and their kids: 45%-60% graduate from HS
- Rights: Labor, gender protection, health protection etc

Mental Health

- Depression
- Anxiety
- Nervios
- Alcohol misuse

Mental Health Risk Factors

- Economic hardship/ Poverty
- Frequent mobility
- Long work hours
- Limited or nonexistent benefits
- Food insecurity
- Low control
- Poor housing

http://www.ncfh.org/uploads/3/8/6/8/38685499/menshealthfactsheet_bb_2.13.15

http://www.ncfh.org/uploads/3/8/6/8/38685499/fs_mental_health_2018.pdf



Familias Unidas por la Justicia and PEW

Mental Health Risk Factors

- Social Isolation was the strongest contributor to anxiety
- Stressful working conditions had the strongest effect on depression

http://www.ncfh.org/uploads/3/8/6/8/38685499/menshealthfactsheet_bb_2.13.15

http://www.ncfh.org/uploads/3/8/6/8/38685499/fs_mental_health_2018.pdf

Causes of Depression related to the immigrant experience

- Separation from loved ones and or family
- Discrimination and harassment in the community
- Long hours and multiple jobs
- Not having a job or receiving bad pay
- Social Isolation
- Drug alcohol abuse

http://www.ncfh.org/uploads/3/8/6/8/38685499/menshealthfactsheet_bb_2.13.15

http://www.ncfh.org/uploads/3/8/6/8/38685499/fs_mental_health_2018.pdf

Determinants of Health

- Biological Factors
- Health Care Access and Quality
- Physical Environment
- Social Environment
- Behavioral Factors
- Stress
- Discrimination

World Health Declaration. 1998

I

We, the Member States of the World Health Organization (WHO), reaffirm our commitment to the principle enunciated in its Constitution that the enjoyment of the highest attainable standard of health is one of the fundamental rights of every human being; in doing so, we affirm the dignity and worth of every person, and the equal rights, equal duties and shared responsibilities of all for health.

World Health Declaration. 1998

II cont.

We emphasize the importance of reducing social and economic inequities in improving the health of the whole population. Therefore it is imperative to pay the greatest attention to those most in need, burdened by ill-health, receiving inadequate services for health or affected by poverty.

World Health Declaration. 1998

II cont

We reaffirm our will to promote health by addressing the basic determinants and prerequisites for health.

World Health Organization's definition of "Setting"

- The place or social context in which people engage in daily activities in which environmental, organizational and personal factors interact to affect health and well being. A setting is also where people actively use and shape the environment and thus create or solve problems relating to health. Examples of settings include schools, work sites, hospitals, villages and cities.

Born in West Oakland, an African American person can expect to die almost 15 years earlier than a White person born in the Oakland Hills.





For every \$12,500 in family income: One additional year life expectancy



Takepart.Photo: Jeff Greenberg/Getty Images

Institute for Health Care Improvement

- The IHI Triple Aim is a framework developed by the Institute for Healthcare Improvement that describes an approach to optimizing health system performance. It is IHI's belief that **new designs must be developed** to simultaneously pursue three dimensions, which we call the "Triple Aim":
- Improving the patient experience of care (including quality and satisfaction);
- Improving the health of populations; and
- Reducing the per capita cost of health care.

<http://www.ihl.org/Engage/Initiatives/TripleAim/Pages/default.aspx>

Patient Centered Medical Homes

(PCMHs)—practices delivering comprehensive care for most health problems; coordinating care among multiple clinicians; and achieving heightened standards for accessibility, quality, and safety.

Value-Based Payment

- Value-Based Payment “ aimed to promote enhanced population health management that should result in the improvement of health and/or systemic cost containment or reduction.
- VBP tied to Performance Measures

Population Health in Medical Homes and Communities with Equity at the Center

- In the Patient Centered Medical Homes

And

- In Communities

- Can we improve Outcomes and Quality Measures without addressing SDOH in the community you serve?

Nothing About Us

Without Us

Communities are key in improving health and wellness

- They live the data
- They have the knowledge
- They are researchers
- They use knowledge produced by others
- They advocate for what works
- They are the most interested in improving their health and that of their communities
- Community advocacy and participation accelerates progress

Change happens when..

People have the opportunity to think and engage in action at all levels.

Are we helping with change?

The places where we live, work, play and learn, affect our health

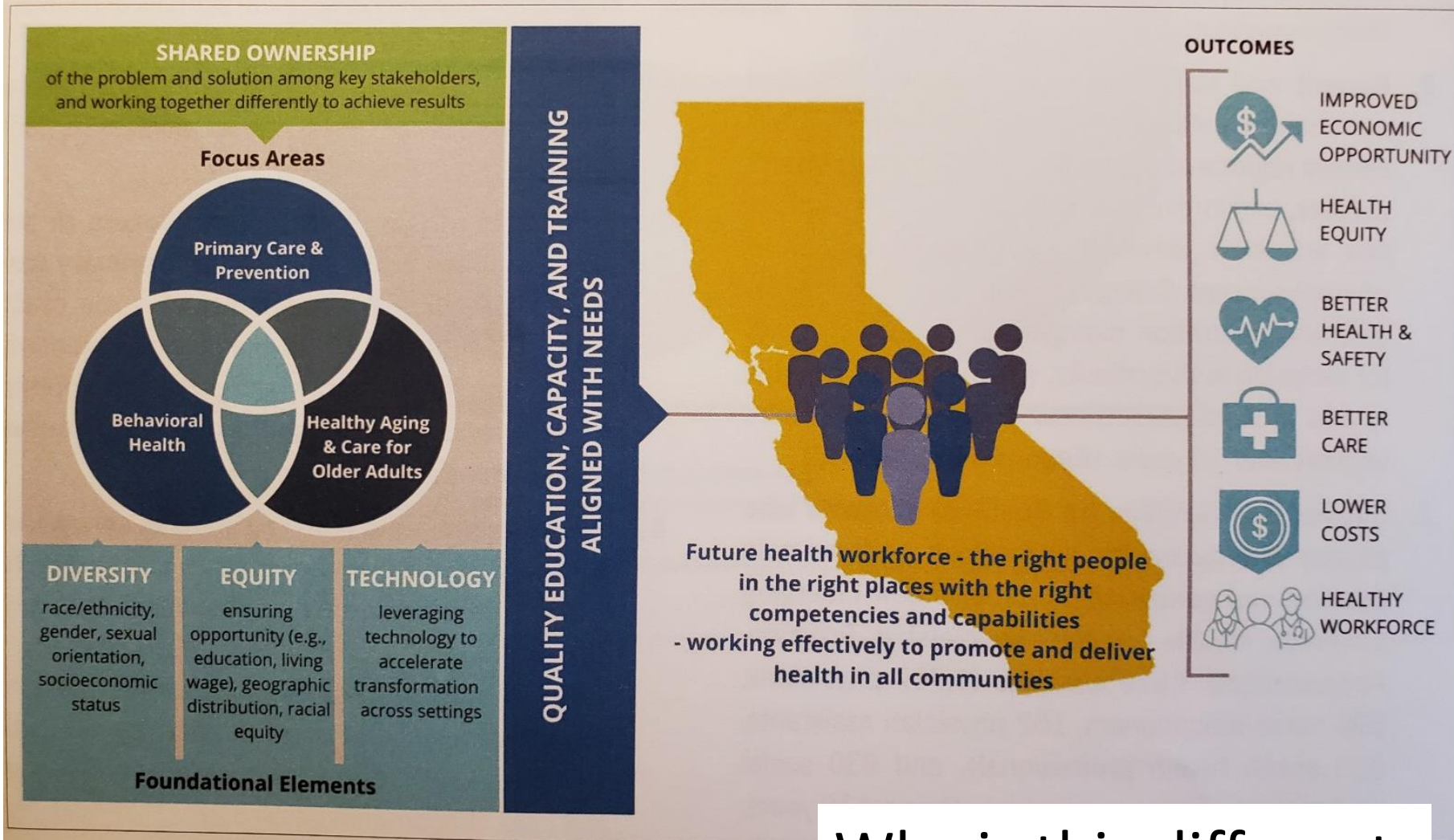
MEETING THE DEMAND FOR HEALTH

FINAL REPORT OF THE
CALIFORNIA FUTURE HEALTH
WORKFORCE COMMISSION

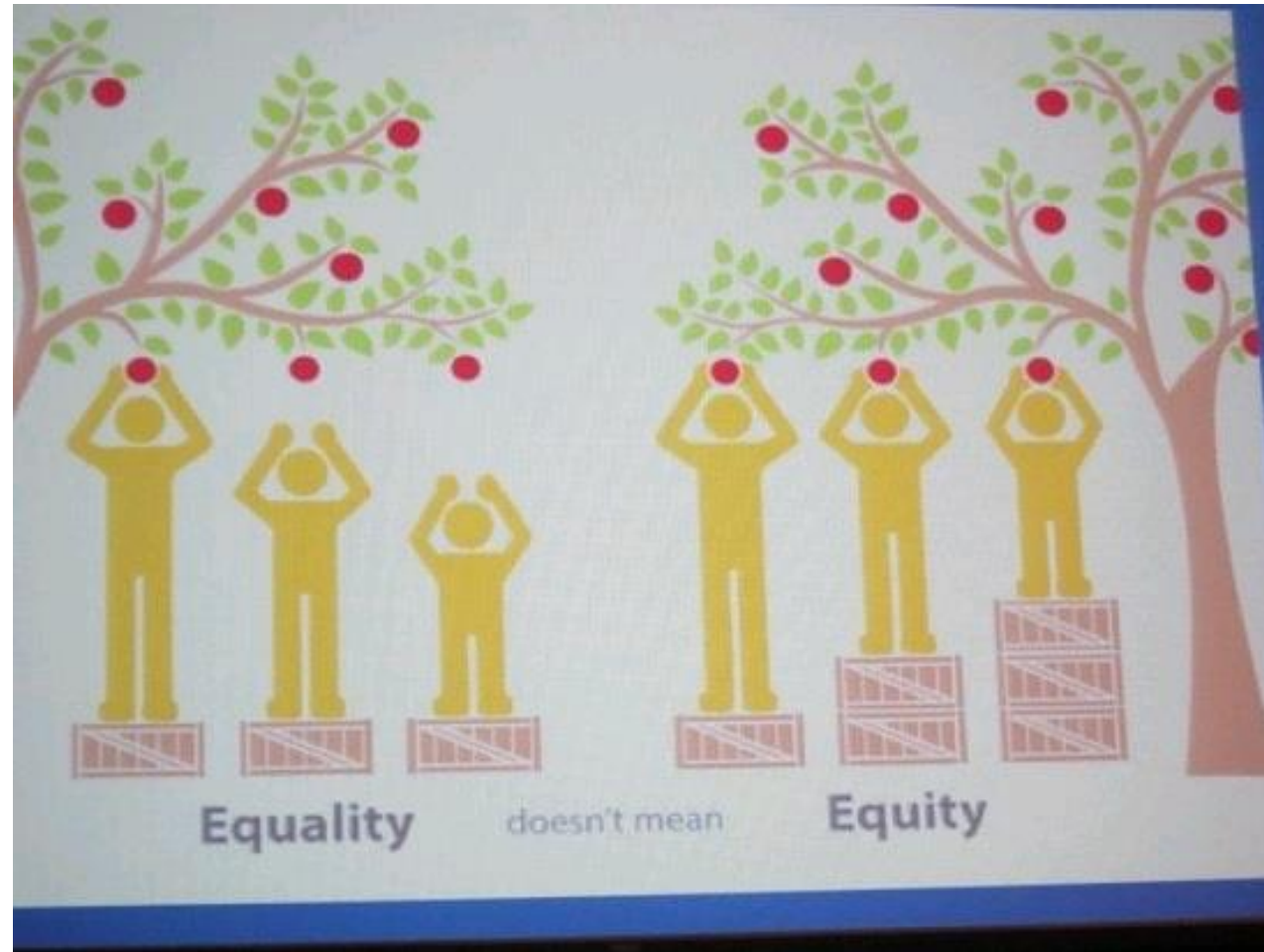


FEBRUARY 2019

A 2030 Workforce Plan: Foundational Elements, Focus Areas — and Outcomes



Why is this different?



www.cfgnh.org/About/NewsEvents/ViewArticle/tabid/96/ArticleId/328/Health-Equity-Summit.aspx

Inclusion of Community Health Workers

- Care models that include CHW/Ps may improve outcomes, increase efficiency and lower health care costs.
- CHWs/Ps can help meet demand for clinical services while also serving as an important resource for population health improvement strategies

The work of Promotores (CHWs)

- Outreach
- Creation of spaces where we develop trust, cultivate the relationship and invite each other to improve and/or maintain individual, family and community health
- Services
- Mechanisms for participation or Hope-Energy-Action Projects



Tere

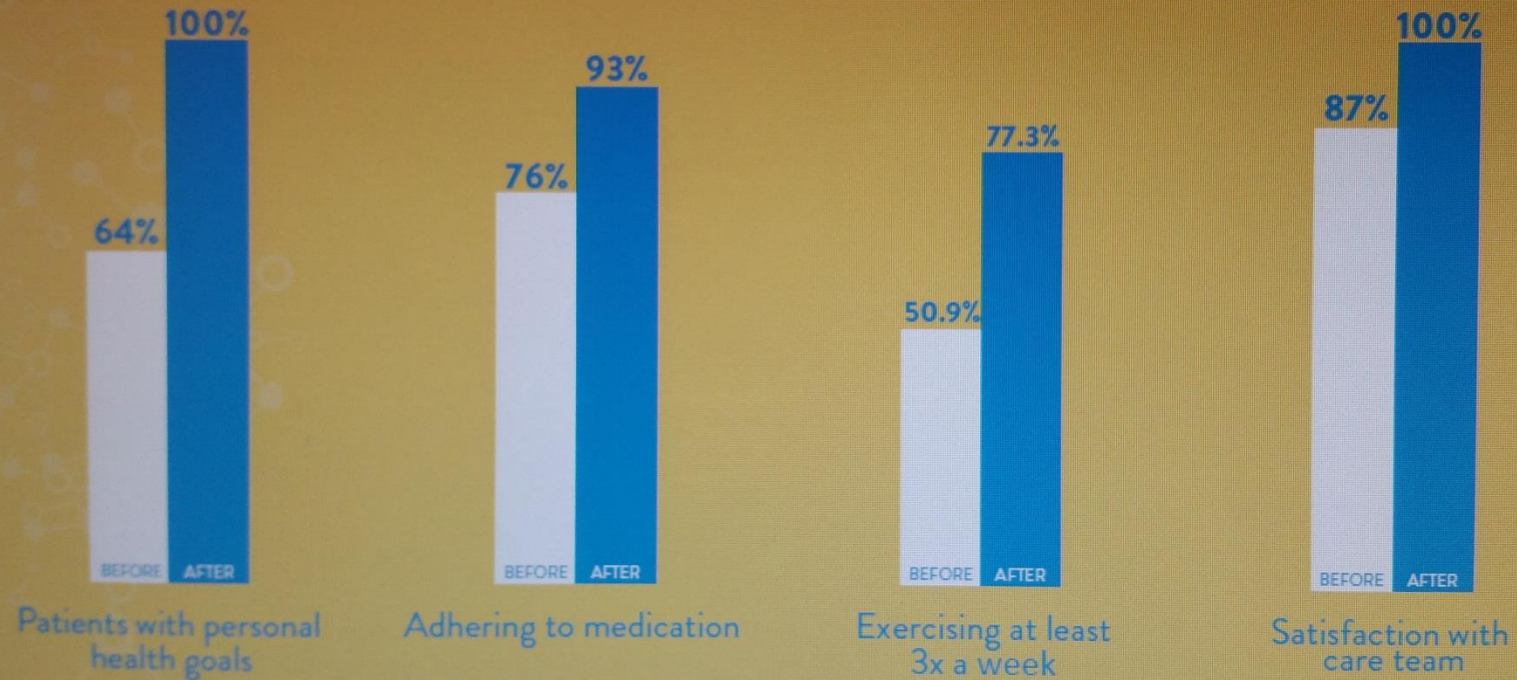








CHANGE IN SELF-MANAGEMENT BEHAVIORS







Santa Ana

Santa Ana is now a sanctuary city for undocumented residents

Dec. 6, 2016 | Updated Dec. 7, 2016 9:51 a.m.



[View Photo Gallery](#)



By JESSICA KWONG, STAFF WRITER »

SANTA ANA – Santa Ana officials



No Contabán

Con mi voto



Rent
Control
NOW!

Control
de
renta
Ahora!

basta
vivir
tona2

Control
de
renta
Ahora!

PERMANE

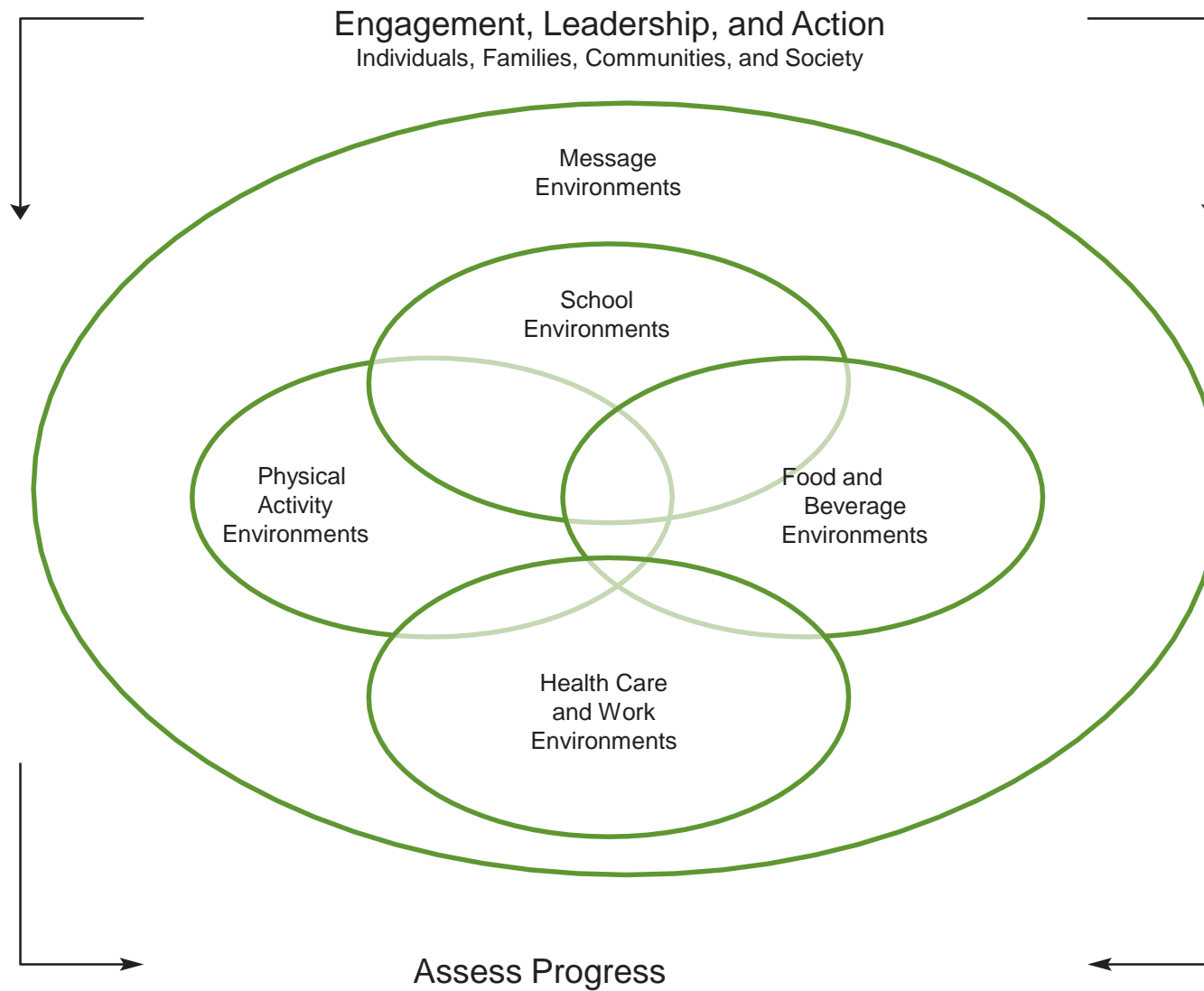
Services and activities are needed.
They are also doors for
participation or missing
opportunities

Health Disparities

- The discussion about health disparities
- The root causes
- The pathway

Needs do not change communities or make people better

- **14. We create healthier communities with each other's strengths**
- We believe that every person has knowledge, skills, strengths and talents that can be mobilized to build healthier communities.
- In general people don't contribute skills unless they think it is worth it, their contributions are needed and are welcomed.



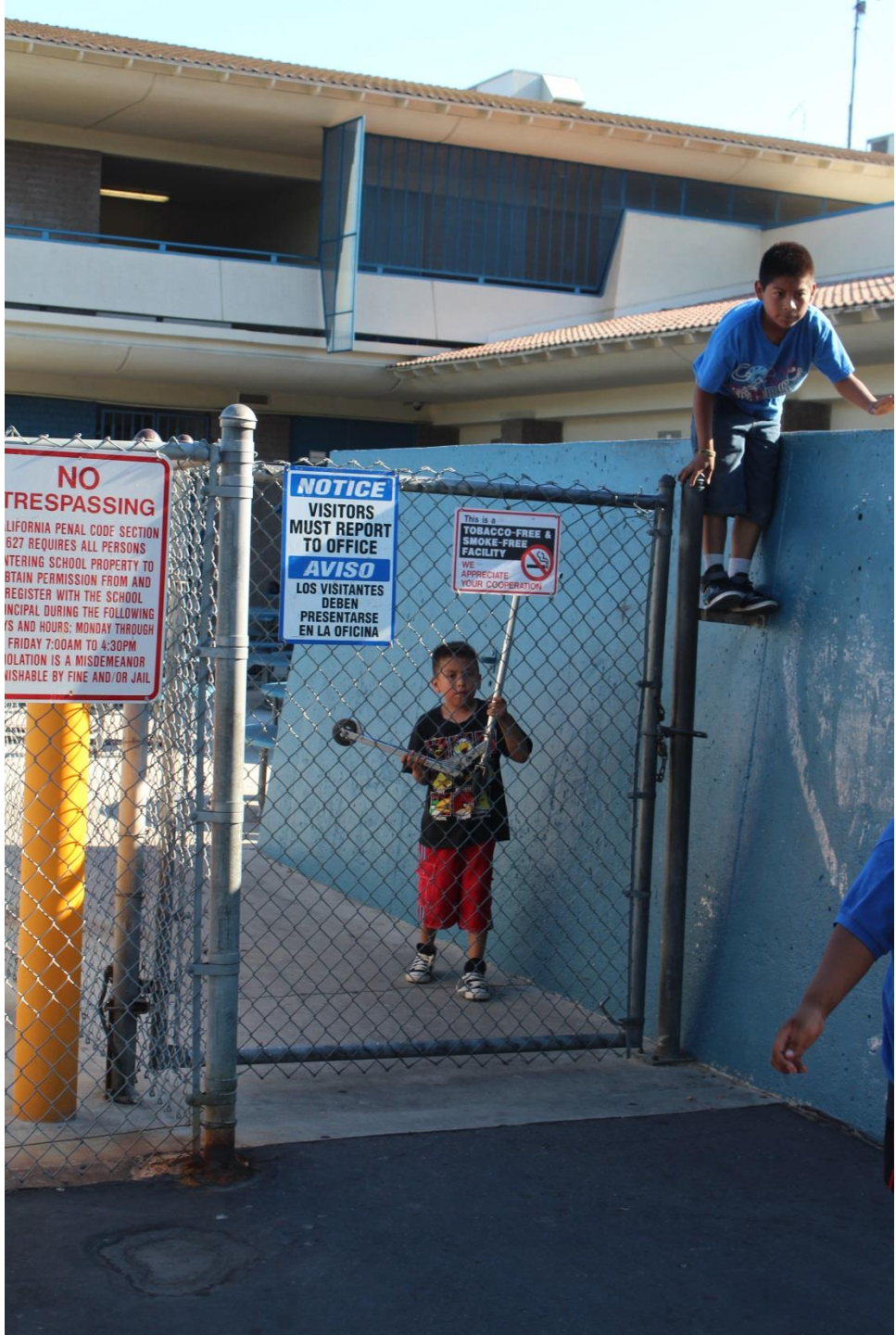
Institute of Medicine (US) 2012 Accelerating progress in obesity prevention: Solving the Weight of the Nation. Washington, DC: The National Academy Press.

<http://www.iom.edu/Reports/2012/Accelerating-Progress-in-Obesity-Prevention.aspx>



Birkstone

Xonath



VIACOM



Childhood obesity.
Don't take it lightly.



EAT FRUITS & VEGETABLES
AND BE ACTIVE

Funded by the U.S. Department of Agriculture's Food Stamp Program

Food Stamps can help. Call 1-888-328-3483 to see if you qualify.

4151

VIACOM



i'm lovin' it



my kinda
shoppin'
spree



Dollar **M** Menu

Price and participation may vary.

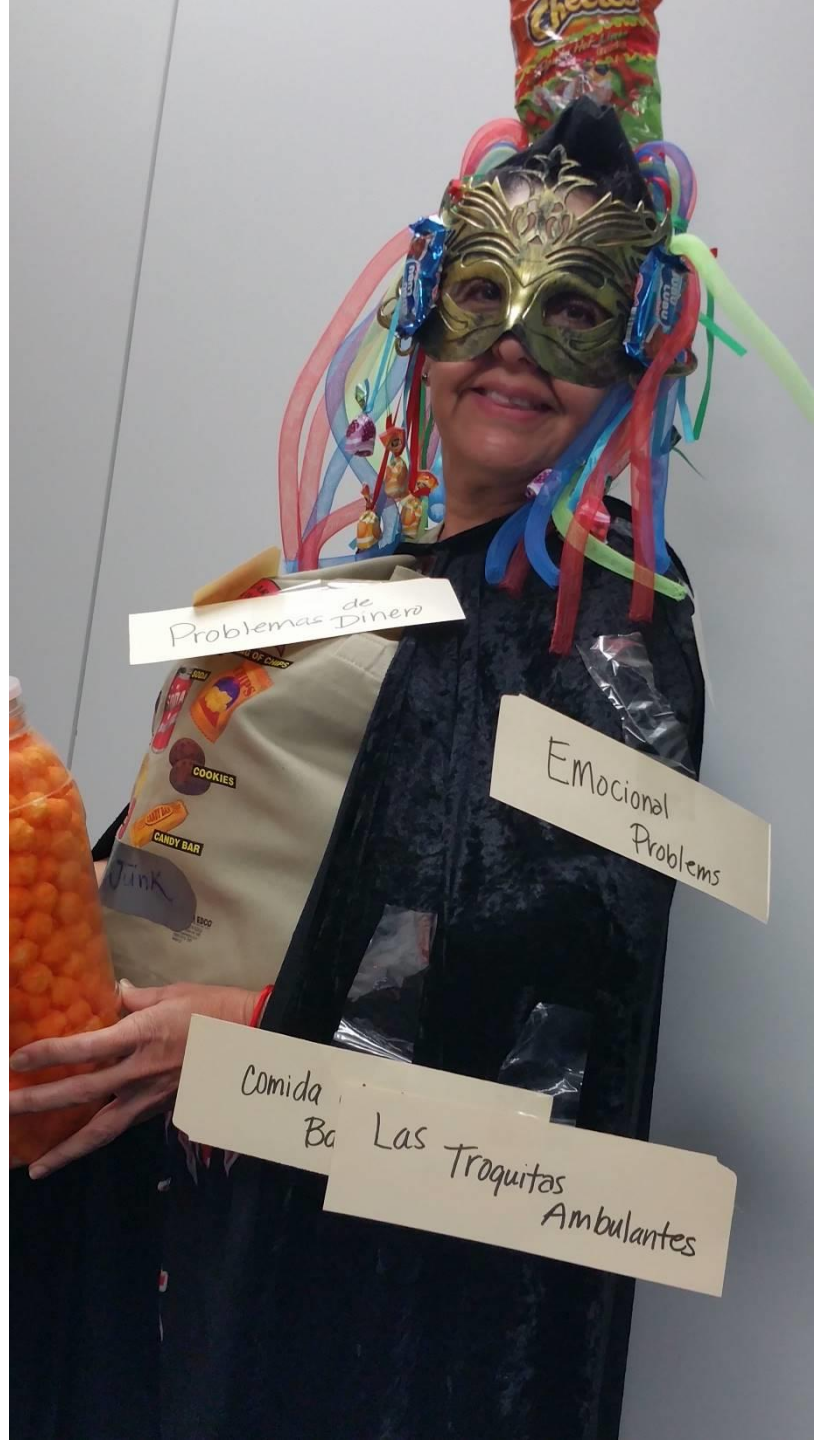
4152

Corbis



Prevention
In





Problemas de Dinero

EMocional Problems

Comida Ba Las Troquitas Ambulantes

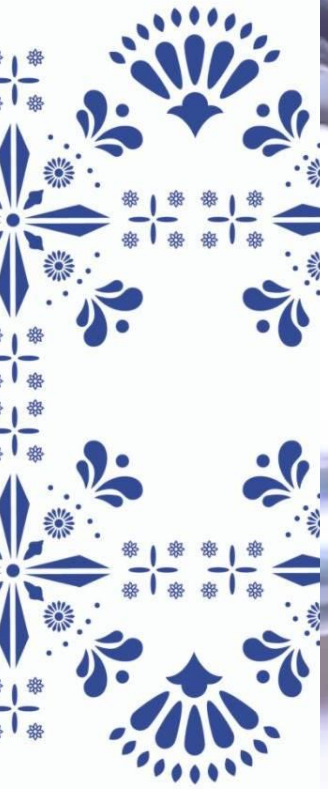






- When you think in a community where agricultural workers can thrive what comes to your mind











*La espiral de la violencia
solo la frena el milagro
del perdón...*

*El juicio final nos
trata por igual...*

*La violencia es miedo de
las ideas de los demás y
peca fe en las propias*

*A través de la violencia podemos
matar al que odias, pero no puedes
matar el odio*

*La muerte por violencia
no se acepta fácilmente...
Por que es una muerte
anti-natural*

**NO MAS MUERTES
SIN RAZÓN!!!!!!!**







- What needs to happen to become healthier and to create healthier places

What would be your 6th Breakthrough Idea?

Respond at PollEv.com/ihievent

Text **IHIEVENT** to **22333** once to join, then text your message

Word cloud containing the following terms: prioritize, separate, whole, authentic, stay, courage, implementation, lead, thinking, leaders, disruptive, innovation, retain, reflect, planning, health, think, find, self, best, change, community, differently, middle, equity, leadership, sustain, curious, reflection, everyday, recruiting, development, transfer, boundaries, lossness, every, ability, quality, personal, young, develop, fold, creativity, both, knowledge, culture, day, SOPK.

ME



La Kopa Sucia
Se Lava En
Casa
Dirty Clothes
is Washed
at HOME

Todos tenemos
Derecho a ser
RESPETADO
Latino Health Access
Te ofrece AYUDA
(714) 542-7792

Todos tenemos
Derecho a ser
RESPETADOS

EL AMOR
LO VUELVE
NOT MUERTO

LA PARTICIPACION
HACE LA DIFERENCIA

(714) 542-7792