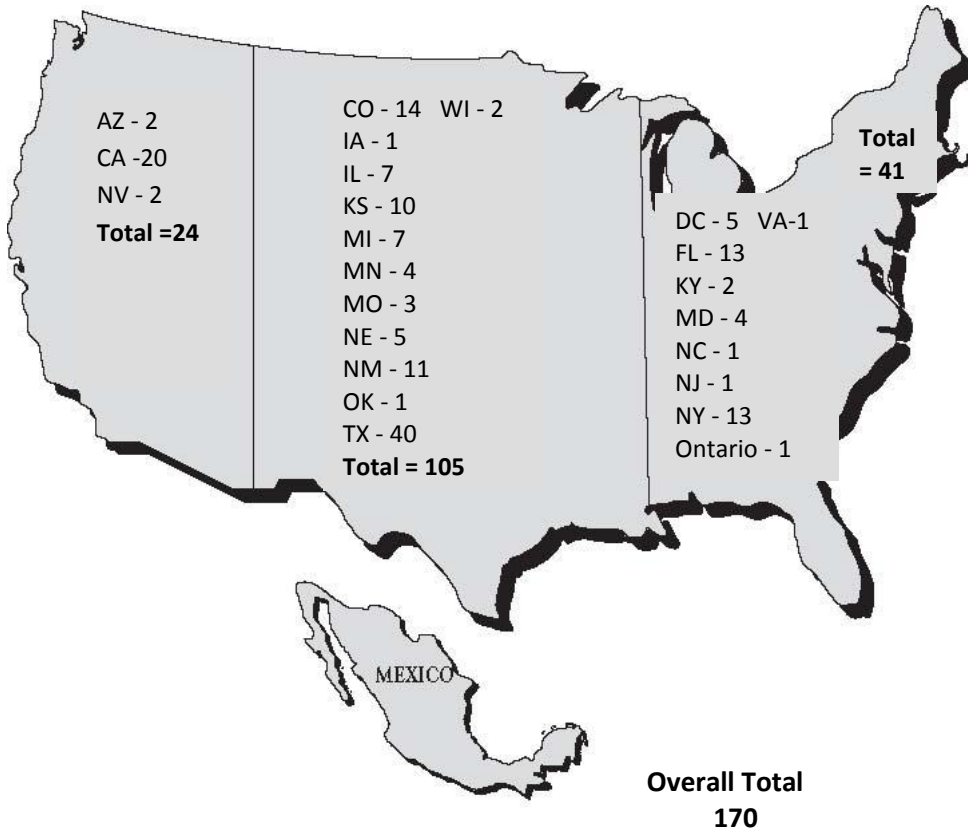


Participant Demographics

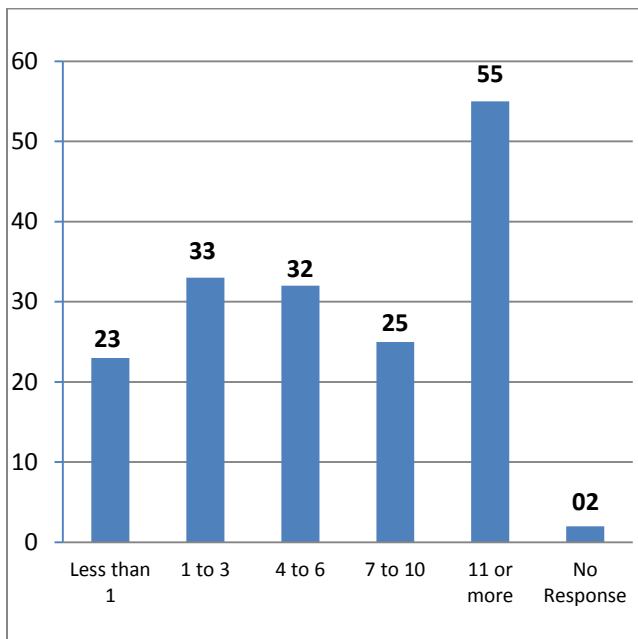


Profession/Occupation

Occupation	Participants
N=170	
Administrator	20
Board Member	11
Case Manager	5
Clinical Director/Mgr.	2
Consultant	4
Executive Director/CEO	13
Health Educator	3
Lay Health Worker	23
Medical Assistant	2
Migrant Director	15
Nurse	4
Nurse Practitioner	1
Outreach Worker	13
Physician	4
Physician Assistant	1
Program Coordinator	14
Researcher	2
Social Worker	4
State/Federal Employee	5
Other	24
Total	170

Years in Migrant Health

N = 170



Previously Attended Forums

N = 170

