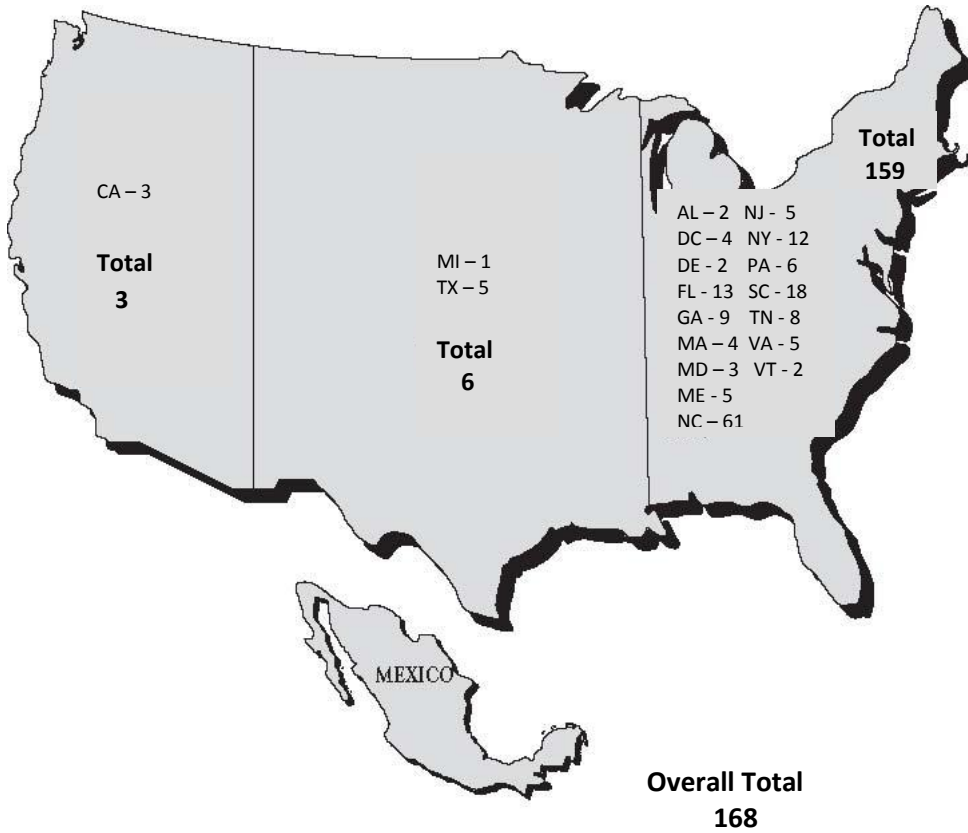


Participant Demographics



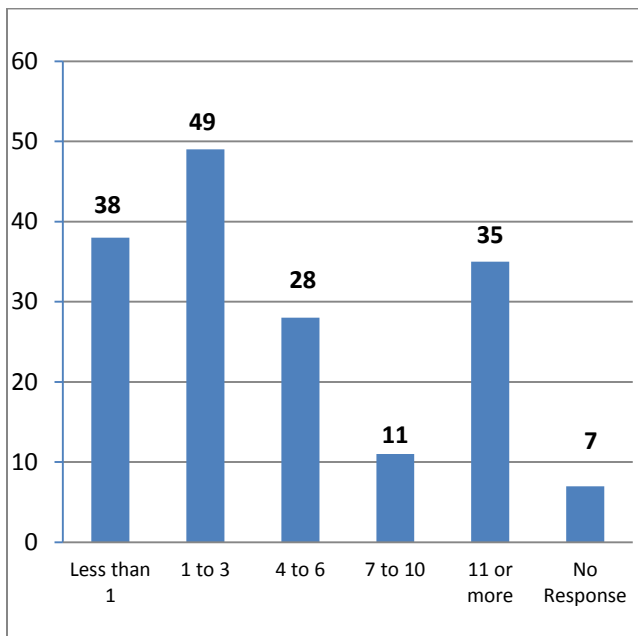
Profession/Occupation

Occupation Participants
N=168

Administrator	14
Advocacy/Policy	8
Behavioral Health Provider	2
Clinical Support Staff	3
Executive Director/CEO	5
Health/Primary Care Provider	4
Lay Health Worker/Promotor(a)	3
M/CHC Board Member	2
Other	14
Outreach Worker/Coordinator	79
Practice/Office Manager	4
Researcher	8
State Primary Care Association Staff	13
State/Federal Employee	7
Student	2
Total	168

Years in Migrant Health

N = 168



Previously Attended Forums

N = 168

