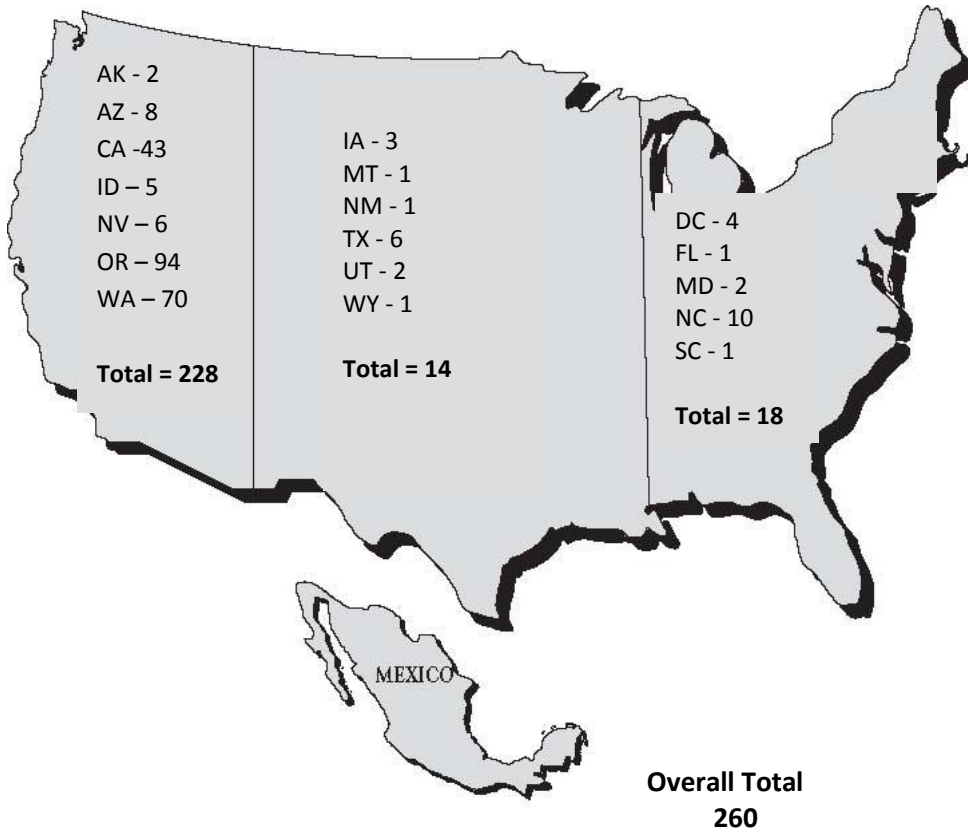


Participant Demographics



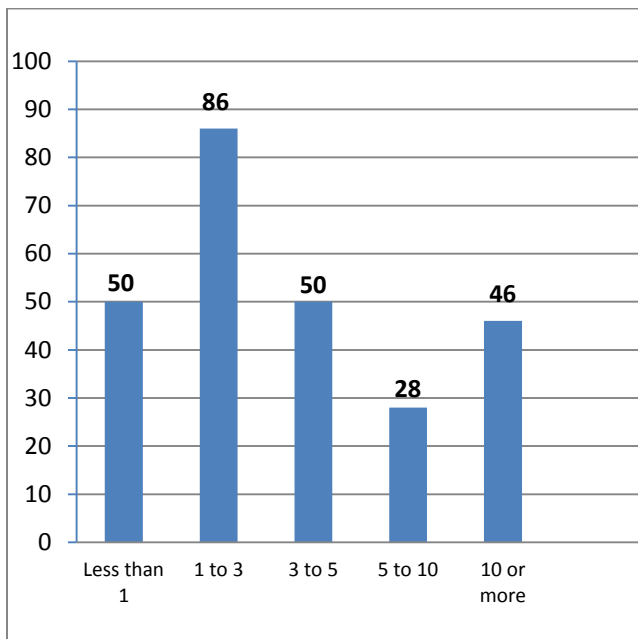
Profession/Occupation

Occupation Participants
N=260

Administrator	13
Clinical Director/Mgr.	12
Community Health Worker	88
Consultant	2
Education & Training	19
Executive Director	15
Government Employee	12
Health Educator	8
M/CHC Board Member	2
Medical Director	3
Nurse	4
Nurse Practitioner	6
Physician	4
Primary Care Association	4
Program Coordinator/Mgr.	21
Researcher	7
Social Worker	2
Other	38
Total	260

Years in Migrant Health

N = 260



Previously Attended Forums

N = 260

