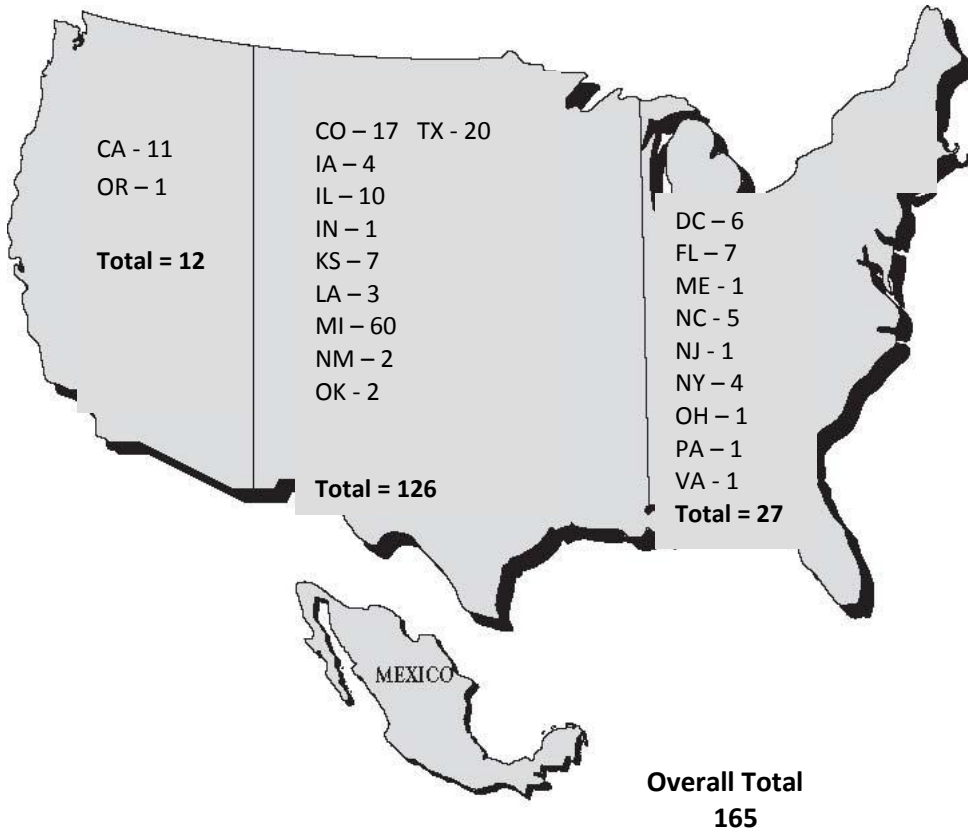


## Participant Demographics

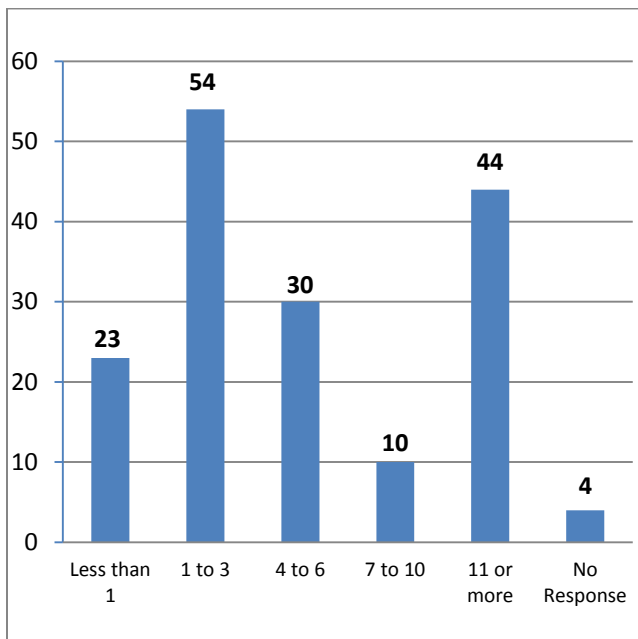


## Profession/Occupation

Occupation	Participants
N=165	
Administrative Staff	15
Board Member	6
Case Manager	4
Clinical Director/Manager	5
Consultant	1
Dental Provider	3
Executive Director/CEO	12
Health Educator	2
CHW/Lay Health Worker/Promotora	11
Medical Assistant	4
Medical Director	1
Migrant Director/Coordinator	14
Nurse	7
Nurse Practitioner	1
Other	34
Outreach Worker	10
Program Coordinator/Director	16
Researcher	5
Social Worker	1
State/Federal Employee	5
Student	4
No Response	4
<b>Total</b>	<b>165</b>

## Years in Migrant Health

N = 165



## Previously Attended Forums

N = 165

