

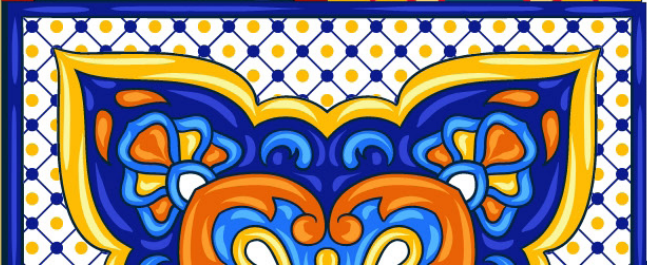


**NCFH**

National Center for Farmworker Health, Inc.

**2022**

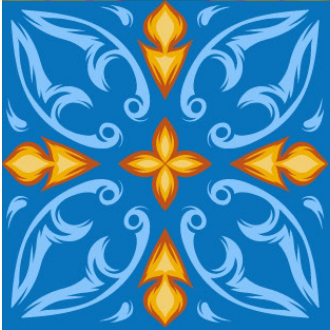
# **IMPACT REPORT**





# Table of Contents

Letter From the CEO.....	3
Growth and Expansion.....	4
Capacity Building and Training.....	5
Health Promotion and Education .....	7
Outreach Impact.....	8
Data Gathering and Information Sharing .....	9
Partners .....	11
Financial Highlights .....	12
Special Thanks.....	13



The National Center for Farmworker Health (NCFH) is a private, not-for-profit corporation located in Buda, Texas dedicated to our mission of improving the health of farmworker families. We provide information services, training and technical assistance, and a variety of products to community and migrant health centers nationwide, as well as community-based organizations, universities, researchers, and individuals involved in farmworker health.

Since our nation's creation, agriculture has been and remains the world's largest industry and is an essential sector of the United States economy. Farmers used to rely on family, locally hired hands, slave labor, and neighbors to meet the labor demands of each harvest season. As crop production grew over the years, migratory and seasonal farmworkers became a critical component in filling labor demands and became a necessity for our nation's economy.

Today, farmworkers continue to be essential to the economy and our nation's food source, but still face a number of social drivers of health that impact their health outcomes. To address these factors, farmworkers need to remain at the forefront of our community and a priority population for health centers. It is also critical for community organizations to work together to address these issues and meet the needs of the farmworker community.

NCFH strives to do this through our mission and in advancing health equity for farmworker populations. Read the following message from Chief Executive Officer, Sylvia Partida, who describes how we implement our mission into action!





# Letter From the CEO

“2022 was a year of reflection for NCFH, commemorating an epic and monumental event – the 60th anniversary of the Migrant Health Act. The significant events that led up to this important legislative action were many, but of note was the surge in public awareness of migratory farmworkers and the conditions they lived in. A pivotal moment was the airing of Edward R. Murrow’s documentary titled “Harvest of Shame” – it aired the day after Thanksgiving in 1960. The airing on this day was very purposeful and strategic – the intent clear – to stress the fact that much of the food cooked for Thanksgiving throughout the country was harvested by migratory workers. The program detailed the exploitation of migratory farmworkers by large agribusiness and highlighted their poor living and working conditions. In addition to the documentary, the farm labor movement of the 1960s with Cesar Chavez, Dolores Huerta and others had a great impact on the public and the lives of farmworkers.

The enactment of the Migrant Health Act in 1962 led to the creation of a national system of care that continues to be the primary safety net for the delivery of healthcare services to farmworkers across the United States. We stand on the shoulders of those **Farmworker Champions** whose voices and actions spearheaded a movement that continues today. Despite the progress that has been made and the accomplishments that we celebrate, farmworker families continue to face some of the same barriers and challenges and suffer the inequities of their forbears. The conditions that allow and perpetuate inequities still exist in anti-immigrant fears and rhetoric, low wages and economic duress, poor worker protections, racism, and prejudice - a sense that agricultural workers in the U.S. somehow take something away from us, rather than contributing to our nation’s economy and amazing diversity.

Individually, we can choose to be followers or participants, but I challenge us to be **leaders** – to be a voice for change, to lead with action and determination. Collectively and in concert with farmworkers, we can help to change the narrative, set new goals, and sow the seeds of health, equity, and hope. We invite you to join us in shaping the future – together we can cultivate, educate, and inform, to win hearts and grow champions for farmworkers and their rights.”



Sylvia Partida  
Chief Executive Officer

# Growth and Expansion

*NCFH was able to grow and expand services to continue our mission and advance health equity for farmworker populations.*

- Through continued funding from the Health Resources and Services Administration and the Centers for Disease Control and Prevention, NCFH extended our reach to new partner organizations and increased health topics addressed through our services.
- In 2022, NCFH was awarded **\$36,000,000** of grant funding by the U.S. Department of Agriculture to distribute payments of up to \$600 to approximately 48,000 farmworkers across the nation to help mitigate a portion of the pandemic-related expenses farmworkers have incurred as essential workers. NCFH is partnering with 24 farmworker-serving organizations nationwide to conduct outreach, provide information on the program, and assist with the application process. These **24 organizations are in 14 states** and are trusted in their local communities, making this two-year project a collaborative effort to provide direct relief to hard-working farmworkers and their families.
- NCFH experienced an increase in the number of individuals and organizations who joined the Ag Worker Access Campaign in the past year.
  - A total of **106 new individuals and organizations joined**, 17 of which were Primary Care Associations, 17 were health centers, 3 were non-profit/community-based organizations, and 17 were other organization types.
  - Now, over **450 members** are part of the Campaign!
- NCFH continues to expand our robust team! This year we added **5 employees**, bringing our total number of staff to 34, and completed our strategic planning as an organization. Now, NCFH has employees **across four states**, California, Texas, Florida, and North Carolina. As our services evolve and expand, so does the diversification and expertise of our staff. Their dedication is essential to the success of NCFH!





# Capacity Building and Training

*NCFH provided workforce training and built the capacity of health center staff, healthcare professionals, and other individuals and organizations to better serve farmworker populations.*

## Overall Training and Technical Assistance (T/TA) provided in 2022

**18,012 total participants** received T/TA (not unique individuals)

**585 total TA encounters** completed with 8,055 individuals

**244 total Trainings conducted** with 9,957 attendees

### Top Training Topics

#### Migratory & Seasonal Agricultural Worker Identification/Increase Access to Care Trainings including:

- Nuts and Bolts of the H-2A Temporary Visa Program

#### Agricultural Worker Health including:

- Ethics, Mental Health, and the Future of Work
- Forging Partnerships and Finding Resources to Promote Worker Health

#### Addressing Social Determinants of Health including:

- Health Literacy to Empower Farmworkers
- Farmworker Outreach Promising Practices: Lessons from the Field

#### Chronic Disease (Diabetes and Cardiovascular) Prevention and Self-Management

#### COVID-19 and Infectious Diseases

### Learning Collaboratives

Learning Collaboratives (LCs) provide participants with an opportunity to learn about a variety of health topics related to agricultural workers through interactive training sessions, technical assistance, and peer to peer exchange of strategies with people around the country from diverse organizations.

#### LC Topics Offered in 2022:

- Emergency Preparedness
- Diabetes Prevention and Self- Management
- Increase Access to Care (Core and Plus)
- Social Determinants of Health
- Community Partnerships
- Governance
- Voucher Programs

#### Total participants for 2022:

- 126 Health Centers
- 21 Primary Care Associations
- 1 Health Center Controlled Network
- 1 National Training and Technical Assistance Partner
- 42 Other Farmworker serving organizations



## Regional Stream Forums

Each year, regional agricultural-worker advocates, health and social service providers, policy makers, and other interested individuals gather in a series of three conferences called “Stream Forums.” Each conference is located in one of three loosely defined migratory streams, representing the flow of agricultural workers up and down the stream as they follow the harvest. The Regional Stream Forums provide agricultural worker-specific continuing education to providers of health care and social services in community and migrant health centers, as well as offering a venue for networking among these professionals in the field. The conferences present an opportunity for participants to discuss regional and national trends which affect agricultural workers and share successful strategies for addressing agricultural workers’ needs.

In Spring 2022, the Regional Stream Forums included the following: the Midwest Stream Forum for Agricultural Worker Health held in-person in Austin, Texas on March 28 – 30 and hosted by the [National Center for Farmworker Health](#); the Western Forum for Migrant and Community Health held as a hybrid event (in-person and virtually) in Portland, Oregon on April 11 – 13 and hosted by [Northwest Regional Primary Care Association](#); and the East Coast Migrant Stream Forum held virtually on April 26 – 29 and hosted by [North Carolina Community Health Center Association](#).

Overall, these three conferences had:

- **643 total attendees** from across many disciplines in migrant health, with the majority identifying their primary responsibility as Community Health Workers, outreach workers, health care providers, administrative staff, and program coordinators & directors.
- Over **50 unique health centers represented**.
- **90 total educational sessions** conducted, collectively providing 120.75 Continuing Education Units.
- **119 partner organizations represented** in attendees including universities/research institutions, health centers, government agencies, non-profits, PCAs, NTTAPs, and other consultants and private entities.
- A highlight of the **60th Anniversary of the Migrant Health Act (1962)**



# Health Promotion and Education

*NCFH utilized media and communication channels to reach our target audience to share information and education about farmworker health and factors that impact their health outcomes.*

## Overall NCFH publications in 2022:

- **249 total resources** available on the [National Resource Clearinghouse](#)
- **24 COVID-19** printed and digital Health education materials created in Spanish, English, Haitian Creole, Mixteco, Purepecha, Triqui, Zapoteco, K'iche', and Mam
- **57,900 COVID-19 Health education materials distributed** to 27 farmworker-serving organizations nationwide
- **3 Bilingual Educational Videos** produced in English and Spanish
- **5 Board Discussion Guides** produced in English and Spanish
- **2 Translated Board E-learning Modules** in Spanish
- **17 Radio Public Service Announcements** produced in Spanish, Mixteco, Triqui, Zapoteco, and Purepecha reaching over 26 million listeners

## Dissemination and Reach:

[190,998 Website views](#)



[NCFH Monthly Digest:](#)  
Total of 3,331 Subscribers



14.5% increase  
in followers on  
Facebook



11.3% increase  
in followers on  
Instagram



[NCFH Boletín de Sol a Sol:](#)  
Total of 240 subscribers



12.2% increase  
in followers on  
Twitter



66.2% increase  
in followers on  
LinkedIn



# Outreach Impact

*NCFH conducted outreach to farmworker populations nationally to meet their needs, overcome health challenges and barriers, and positively impact their communities.*

## Mitigating COVID-19 and other infectious diseases

- **Over 310,000 in-person or telephonic outreach** interactions were conducted with farmworkers and their family members.
- More than **8,000 farmworker work and housing sites were visited** during these interactions.
- Nearly **20,500 COVID-19 and influenza vaccinations were administered** to farmworkers and their family members.
- Nearly **470,000 facemasks, gloves, and units of hand sanitizer were distributed** at community events and during housing and work site visits by NCFH and subcontracted farmworker-serving organizations.
- NCFH collaborated with employers to conduct **2 Vaccination Clinics** resulting in **43 workers** receiving COVID-19 booster doses, **21 workers** receiving the first dose of MPX vaccines, and **235 H-2A workers** receiving information about health services and COVID-19 treatment resources.
- NCFH provided **20 technical assistance and 2 trainings to 17 agricultural employers, associations, and industry stakeholders.**



*NCFH staff on an outreach trip*



Una Voz Para La Salud  
Call for Health

**Call for Health (CFH):** a nation-wide toll-free, bilingual, health information and referral service program for farmworkers and their families.

- **372 information requests** received
- **443 individuals** received COVID-19 information, referrals to vaccination and testing sites, or assistance in retrieving lost CDC vaccination cards
- **1,672 total Individuals** received support for services related to healthcare, social needs, COVID-19 testing and vaccination, legal aid, interpretation, and mental health.
- **430 individuals** referred to healthcare services in their community
- **221 Individuals** referred to social services
- **\$3,175.46 in financial assistance was provided** to farmworkers: for vision, specialty care, dental care, eye surgery, & radiology health services.
- Distributed CFH posters and digital flyers to agricultural employers reaching **over 100 workers.**

# Data Gathering and Information Sharing

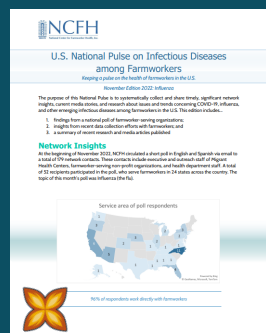
*NCFH conducted research in collaboration with farmworker communities to gather data and actionable findings about farmworkers' experiences and provide recommendations on how best to meet their arising needs.*

**Farmworker COVID-19 Community Assessments (FCCAs):** a series of community assessments conducted as part of a national COVID-19 outreach and vaccination project for farmworkers supported by the Centers for Disease Control and Prevention (CDC). These assessments highlight the racial and linguistic diversity of farmworker communities, disparities in COVID-19 vaccination rates, and widespread exposure to key COVID-19 transmission risk factors, such as overcrowded housing and shared transportation to work.

- In partnership with numerous local community-based organizations, NCFH conducted **surveys with 1,410 farmworkers** in selected counties and in-depth interviews with more than **37 farmworkers, farm employers, and organization representatives** in Colorado, Georgia, New Jersey, North Carolina and Washington during 2022.



**U.S. National Pulse on Infectious Diseases among Farmworkers:** a monthly publication that shares significant network insights, current media stories, and research about issues and trends concerning COVID-19, influenza, and other emerging infectious diseases among farmworkers in the U.S. Each edition includes: 1) findings from a national poll of farmworker-serving organizations, 2) insights from recent data collection efforts with farmworkers, and 3) a summary of recent research and media articles published.



**4 publications developed in English and Spanish in 2022**

## Topics:

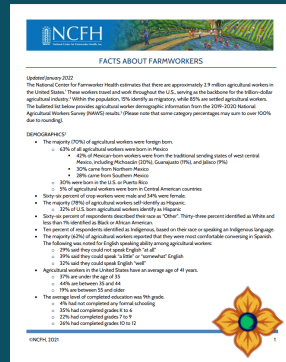
- Long COVID
- MPX
- Sexually Transmitted Infections
- Influenza

## Total downloads:

- English publications: 53
- Spanish publications: 4

## Agricultural Worker Factsheets

7 total fact sheets translated and published to Spanish in 2022



- Facts about Agricultural Workers (First most accessed Factsheet with **4,849 views**)
- Folk Medicine and Traditional Healing (Second most accessed Factsheet with **694 views**)
- Indigenous Agricultural Workers (Fourth most accessed Factsheet with **576 views**)
- 4 COVID-19 quarterly updates

Developed/updated 2 fact sheets to be published and translated January 2023

- Data from the National Agricultural Worker Survey (Third most accessed Factsheet with **684 views**)
- Facts about Agricultural Workers

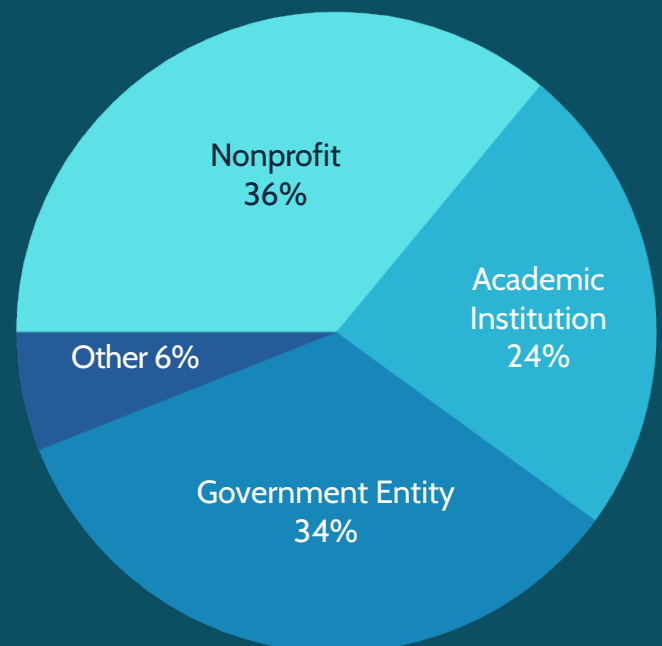
In total, individual fact sheets were accessed **8,984 times** and were downloaded **1,427 times** as pdfs from the website.

## Population Data and Research

Farm Labor Data Dashboard: an interactive, web-based tool used to centralize nationally available data related to farmworkers in the U.S. and integrates data from sources such as the U.S. Department of Labor, the U.S. Department of Agriculture, and others to gain an understanding of the national landscape of farm labor.


- Launched in **July 2022**
- **258 Total Users** in 2022

### Farm Labor Dashboard Users






# Partners



*NCFH greatly values all the collaborations and partnerships that contribute to our efforts and make it possible for us to successfully fulfill our mission of improving the health of farmworker families.*




Partnership with **30 national, state, and local farmworker-serving organizations**, along with the CDC to help lead a national effort to prevent and mitigate COVID-19 in farmworker communities throughout the country.

- Special thanks to our National Agricultural Worker Advisory Council, the National Network of Farmworker Serving Organizations, and the Farmworker Health Education Committee.



Partners to address the Bureau of Primary Health Care (BPHC) priorities including **emergency preparedness, mental health, human trafficking and intimate partner violence, social drivers of health, health equity, and other health outcomes:**

- [Farmworker Health Network](#)
- [Social Determinants of Health Academy](#)
- [Health Partners on IPV and Exploitation](#)
- [Special and Vulnerable Populations Diabetes Task Force](#)
- [HRSA Office of Intergovernmental and External Affairs](#)
- [Special and Vulnerable Populations Forum](#)
- [National Resource Center](#)



Partnerships with various national and state organizations focused on chronic conditions, including **diabetes, hypertension, and heart disease. Support has been focused on prevention and self-management efforts, as well as on other social drivers of health that affect chronic conditions such as food insecurity and connectivity.**

- [Association of Diabetes Care and Education Specialists \(ADCES\)](#)
  - [American Diabetes Association](#)
  - [Texas Department of State Health Services](#)
  - [University of Texas at Tyler Health Science Center](#)
  - [American Heart Association](#)
  - [Texas Association of Community Health Centers](#)
- 
- 

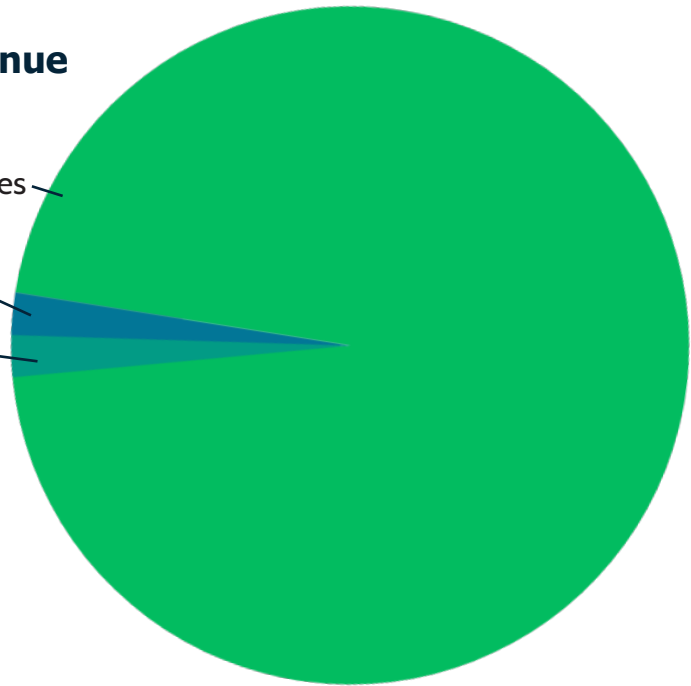
# Financial Highlights

*As a non-profit organization, NCFH has a mixture of funding streams, including governmental sources, donations, and other revenues.*

**Total Funding \$7.6 million**

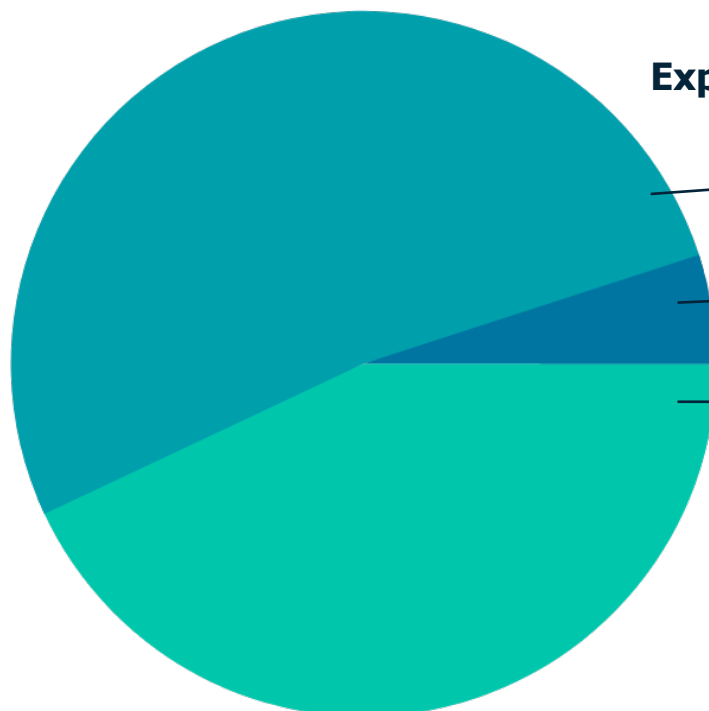
## Revenue

96% Governmental Sources  
2% Fee for Service  
2% Other



## Expenses

52% Contractual  
5% Other  
43% Employees





# Special Thanks

*NCFH is eternally grateful to the estimated 2.5 million farmworkers for their continuous labor to bring food to our tables daily! We would also like to express our deep gratitude to those who have given their time and expertise with participation in the following:*

- NCFH Board Members
- Ag Worker Access Campaign Task Force members
- National Agricultural Workers Advisory Council members
- Farmworker Health Education Committee members
- Indigenous Farmworkers Advisory Committee members
- Centers for Disease Control and Prevention technical advisors

*Join us in becoming a Farmworker Champion in Migrant Health!*



[www.ncfh.org](http://www.ncfh.org)  
[info@ncfh.org](mailto:info@ncfh.org)

