



Friday, June 19, 2020

A Message from Farmworker Health Network (FHN)

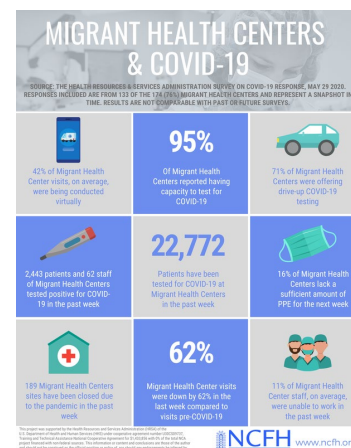
The **Farmworker Health Network (FHN)** is comprised of six National Cooperative Agreements (NCAs) in agricultural worker health funded through the U.S. Department of Health and Human Services' Health Resources and Services Administration (HRSA) to provide training and technical assistance to current and potential Health Centers. The FHN includes: the *National Association of Community Health Centers (NACHC)*, *Health Outreach Partners (HOP)*, *Farmworker Justice (FJ)*, *MHP Salud*, *Migrant Clinician's Network (MCN)*, and the *National Center for Farmworker Health (NCFH)*. The FHN stands with everyone impacted by the Coronavirus (COVID-19), especially health providers and patients from special and vulnerable populations. In a consolidated effort to bring to you the latest updates, the FHN will be sending out this biweekly email with resources and information to keep you informed and assist you in continuing to serve your patient population. Information related to this pandemic changes daily, so we also encourage you to visit the [CDC's website](https://www.cdc.gov) for additional updates that may impact your specific service areas.

Resources

Updated NCFH Infographic!

HRSA Survey on COVID-19 Response

HRSA has begun conducting biweekly surveys with Community Health Centers to track their response to the COVID-19 pandemic. The survey responses provide information about PPE needs, clinic site closures, COVID-19 testing, and other factors. See the latest [NCFH infographic](#) describing the results of the most recently available survey data for Migrant Health Centers.



Coronavirus Safety Guide- Bilingual Resource



**OUTCOMES-DRIVEN
EXPERIENCED
INNOVATIVE**

As communities begin to reopen, it is crucial that everyone continues to practice safety measures to prevent the spread of COVID-19. This bilingual coronavirus safety guide booklet covers information on how the virus is spread, how to wear and properly dispose of a face covering, and tips to practice social distancing. The guide can be printed and conveniently folded into a booklet. To access this resource in English and Spanish, please visit [here](#).

Agricultural Worker Health and COVID-19

Migrant Clinicians Network has been hard at work fielding clinician requests for guidance as the COVID-19 pandemic, and the anxiety it produces, stretch into even very rural communities. Below are just a few Farmworker and COVID-19 specific recently recorded webinars designed for the clinical team that includes Community Health Workers and outreach staff.



WEBINAR | Work in the time of COVID-19: Protecting Vulnerable Workers and Their Families

<https://www.migrantclinician.org/toolsource/resource/webinar-work-time-covid-19-protecting-vulnerable-workers-and-their-families.html>

SEMINARIO VIRTUAL | Poblaciones Vulnerables y el COVID-19: Estrategias para apoyar a las comunidades en Puerto Rico

<https://www.migrantclinician.org/es/toolsource/resource/seminario-virtual-poblaciones-vulnerables-y-el-covid-19-estrategias-para-apoyar->

WEBINAR | Grief in the Time of COVID-19: Loss, Connection and Hope

<https://www.migrantclinician.org/toolsource/resource/webinar-grief-time-covid-19-loss-connection-and-hope.html>

[Click here to explore additional COVID-19 specific resources](#)

Recent and Upcoming Events

“Platica” on the Reality of the Agricultural Worker during a Pandemic



The National Center for Farmworker Health (NCFH) hosted a “Platica” in Spanish on Thursday, June 11, 2020 through Facebook Live. They discussed what is happening with the coronavirus in rural areas and throughout the country. Our guest speakers included William Lozana Arciniega from the Mexican Consulate in Atlanta, Victoria Mesa Estrada from Southern Poverty Law Center, and Sandra Leal of Tabula Rasa Healthcare. They addressed how to prevent coronavirus transmission, how to ensure that we get correct information about coronavirus, and what labor rights agricultural workers have in the context of the pandemic.

View the recording of this event [here](#).

MHP Salud’s Monthly Technical Assistance Call: CHWs and COVID-19



**OUTCOMES-DRIVEN
EXPERIENCED
INNOVATIVE**

MHP Salud will provide technical assistance to Health Centers looking to learn more about Community Health Workers (CHWs) and their unique response to COVID-19. Join to learn and discuss common challenges, best practices, and helpful resources to strengthen your CHW programs and efforts during these times.

Wednesday, June 24th, 2020 at 2:00PM (CDT) / 3:00PM (EDT)

Meeting ID: 656 807 156

Join Zoom Meeting via **Access Link:** <https://mhpsalud.zoom.us/j/656807156> **or through Dial to Connect Number:** +16699006833 (United States)

Peer-to-Peer Webinar: COVID-19 & Diabetes Management in Special & Vulnerable Populations

HOP presents an opportunity to hear from peers in healthcare and public health about outreach practices related to diabetes management during the COVID-19 pandemic. The webinar features a panel of health center and NCA staff who will share how they have adapted their outreach services and resources to address the needs of special and vulnerable populations during this unprecedented time. This webinar was recorded on June 3rd, 2020.



[View the webinar recording here.](#)



Update to Working in COVID19 times: Protecting vulnerable workers and their families in Spanish

**Thursday, July 2nd, 2020 at 12:00 PM (CDT) / 1:00PM (EDT)
(US and Canada)**

[Please click here to register for Actualización. Trabajando en los tiempos de COVID19: Protegiendo a los trabajadores vulnerables y sus familias](#)

¿Cómo cuidar y cómo proteger la vida de los trabajadores más vulnerables en estos tiempos del COVID-19? Continúa siendo la pregunta que todos intentamos responder. El virus continúa abrumando al mundo, impactando la vida de todo trabajador y sus familias. Sin embargo, la mayoría de los trabajadores migrantes e inmigrantes continúan siendo las poblaciones más vulnerables porque ellos no tienen esa oportunidad. COVID-19 ha dejado al descubierto la importancia de los trabajadores del campo, ahora considerados esenciales. La pandemia nos ha hecho enfocarnos en el como una amenaza ocupacional muy real para la salud de trabajadores, sus familias y su comunidad. Acompañe a MCN en este seminario virtual donde proporcionaremos información actualizada sobre COVID-19 y responderemos a las preguntas de los trabajadores, a la vez que estrategias y recursos para proteger la vida de los trabajadores y sus familias.

Objetivos de Aprendizaje:

Al concluir la presentación los participantes podrán...

- Identificar información actualizada sobre CoVID-19 y formas de prevención para trabajadores esenciales
- Identificar riesgos para los inmigrantes y otros trabajadores esenciales que son difíciles de alcanzar.
- Revisar estrategias y recursos para ayudar a proteger a los trabajadores y sus familias.
Replantear el papel de los trabajadores de salud/alcance comunitario en la era de COVID-19.

Presenters: Eva Galvez, MD, Virginia Garcia Memorial Health Center and Alma Galvan, MCH, Migrant Clinicians Network

The **FHN** is committed to continuously serving our constituents, health providers, and patients across the country. We stand with you in solidarity during this difficult time!



This publication was supported by the Health Resources and Services Administration (HRSA) of the U.S. Department of Health and Human Services (HHS) as part of the following National Training and Technical Assistance Cooperative Agreements awards: National Center for Farmworker Health (NCFH) in the amount of \$1,433,856; Farmworker Justice (FJ) in the amount of \$450,000; Health Outreach Partners (HOP) in the amount of \$770,259; Migrant Clinicians Network (MCN) in the amount of \$1,094,709; MHP Salud in the amount of \$617,235; National Association of Community Health Centers (NACHC) in the amount of \$6,375,000 all of these amounts with 0 percent financed with non-governmental sources. This information or content and conclusions are those of the author and should not be construed as the official position or policy of, nor should any endorsements be inferred by HRSA, HHS or the U.S. Government. For more information, please visit [https://: www.HRSA.gov](https://www.HRSA.gov).

Farmworker Health Network